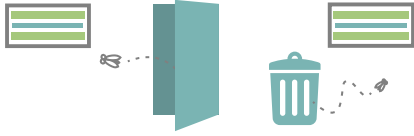


# Clues for effective use of insect light traps

Asahi Industry Co.,Ltd.

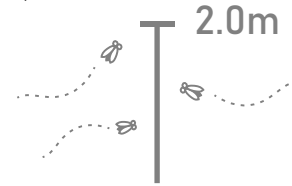
## Install near invasion entrances and habitat areas

Place insect light traps between the main entry points and the areas you are trying to protect so that you intercept the pests before they reach the critical areas.



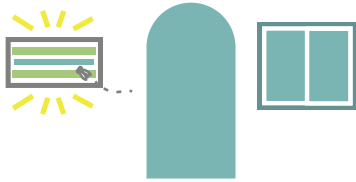
## Installed 2.0 m or less from the ground

Flying small insects cannot fly high; they fly around at a height of 2.0 m or less. In addition, it is inconvenient to replace glue tapes attached to insect light traps if they are installed at a high place.



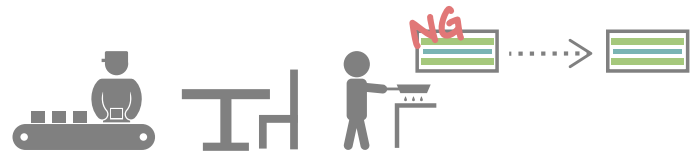
## Not leak out the light to outside through windows

If the light of the UV lamp leaks outside via windows, it invites insects inside from outside.



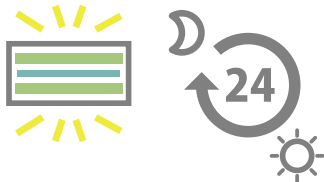
## Avoid installing near production lines

Insect light traps are designed to be attractive to flying insects and will draw them towards the trap. You should keep insect traps as far away from the areas you want to protect



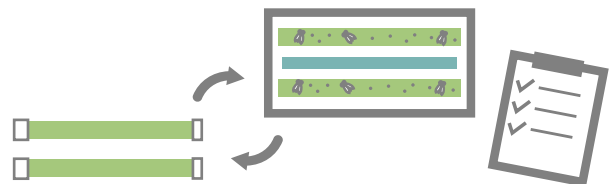
## Keep turning on 24hrs

Insects are more active in the night. Light traps work more effectively when the other light devices are turned off.



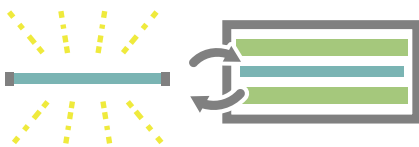
## The glue tapes should be changed regularly

You will know the level of hygiene by checking adhesive tapes regularly.



## Change UV lamp by its proper replacement period even the light flashes

The amount of emitted UV rays start to go down to a lower level to draw insects after the recommended useful life even the lamp will flashes. Changing UV lamps in the proper period is important to use insect traps effectively.



## Mushipon's glue tapea don't lose its capturing power even after long-term storage.

Mushipon's glue tape has a long life span, and can be used for 5 years unopened, and for 2-3 years after opening without deterioration.



## Pull out the tape slowly in cold season

The glue on the tapes becomes hard during cold weather, making them difficult to pull out. Please store the tapes in a warm place or warm them up and pull them out slowly.



## Insect light trap's lifespan is 40,000 hours

The lifetime of the built-in fluorescent lamp stabilization period is 40,000 hours. It is approximately 4.5 years.

