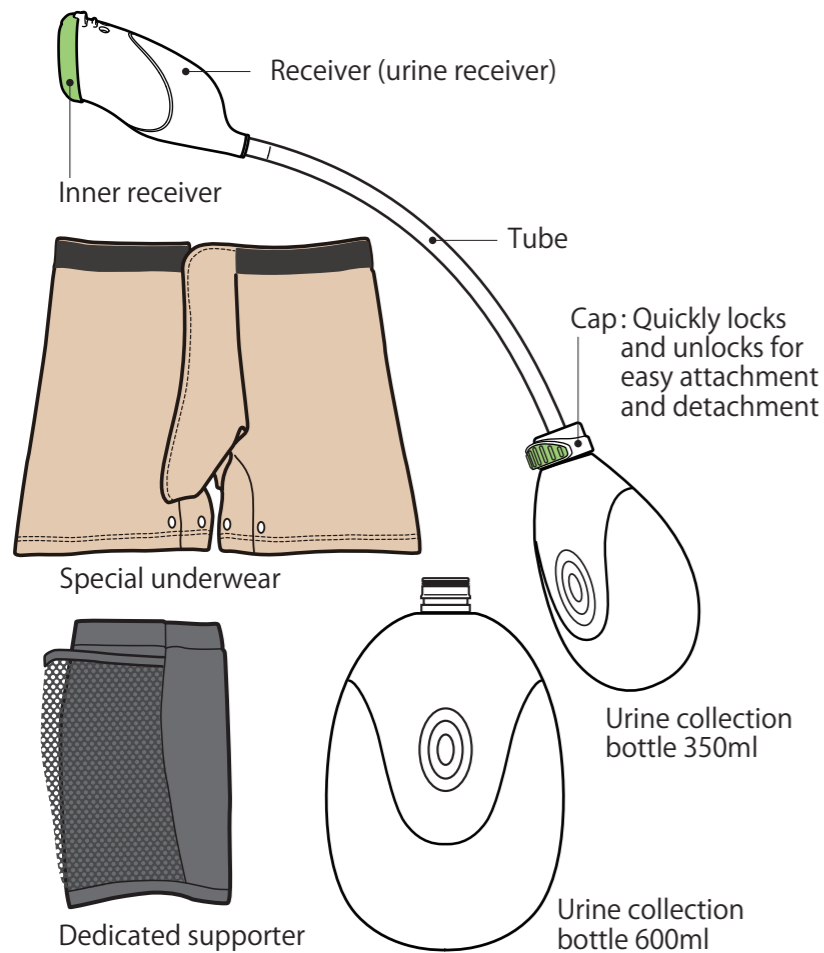


Names of each part and included accessories



Materials

- Receiver : Silicone
- Bottle : Polyethylene (PE)
- Cap : Polyacetal (POM)
- Special underwear : Polyester, Cotton
- Tube : Polyvinyl chloride (PVC)
- Dedicated supporter : Nylon

FAQ

[Q] What is the secret to preventing leaks?

In order to prevent leaks, ensure that the following two conditions are met:

1. The receiver must not come off
2. There must be difference in height between the components

[Q] What are the criteria for replacement?

Hardening and deterioration of the tube is a sign that it needs to be replaced.
Individual components can also be purchased separately.
Also, washing the device frequently and keeping it clean will allow you to use it for a long time

[Q] How often should I wash the device?

Since unsanitary conditions increase the risk of infection, be sure to wash it once a day.

[Q] Can I use the device lying down?

No. This product is a urine collector designed to be used in a wheelchair (sitting position).

Precautions

Before using the device, be sure to read this manual and fully understand its content.



- It is recommended that you use the product at home where you can handle leaking until you become familiar with the device. Use the product with the appropriate method until you are familiar with its usage.
- Discontinue use of the product immediately if you experience any skin irritation.
- Prolonged wearing of the product may result in itching, rash, or other conditions depending on your body.
- Be sure to clean, disinfect, and dry all parts to prevent bacteria or mold, which can lead to odor or infection. Also, reusing on other people is prohibited.
- Due to individual differences in body types and usage, we cannot guarantee that you will obtain the benefits and effects of this product.
- We will not offer assistance in case of problems resulting from using this product after modifying it in any way.
- We are not responsible for any physical injuries or other damages if this product is used in a manner other than that recommended by our company.
- To ensure proper flow of urine in the product, use with the receiver positioned higher than the urine collection bottle.
- Store in a dry location at room temperature out of direct sunlight.

 **Asahi Industry Co.,Ltd.**

Asahi Industry produces a new urination care product
1-11-22 Yonban, Atsuta, Nagoya, Aichi, Japan
TEL: +81-52-671-5193 FAX: +81-52-671-5196
For more information / Healthcare division: info_e@asahi-sg.co.jp
<https://asahi-packaging.com>

Men's wearable urine collector for wheelchair use

AS-KUR010

Usage Guide

In order to use the device comfortably, it is important to understand and become familiar with its characteristics. It's important to understand how to use the device correctly and become able to urinate independently.



Before using the product, please read this instruction manual carefully and fully understand how to use the device correctly.

How to put on the device



Until you are familiar with the product, please use it with a waterproof sheet to prevent the wheelchair and cushion from getting dirty in case a leak occurs.

See here for a video on how to secure the device in place

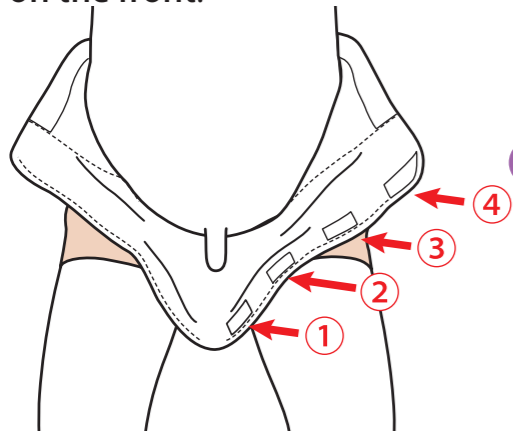


See here for a video on how to secure the device by yourself

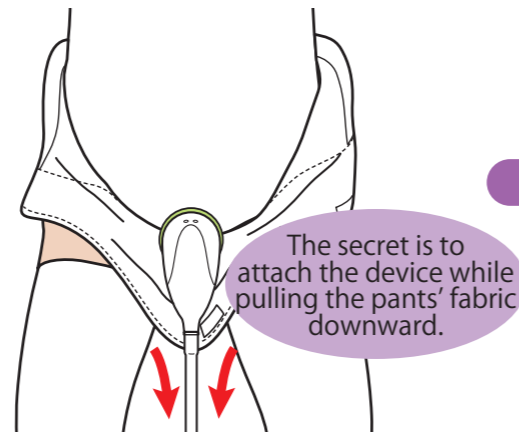


● How to use the special underwear

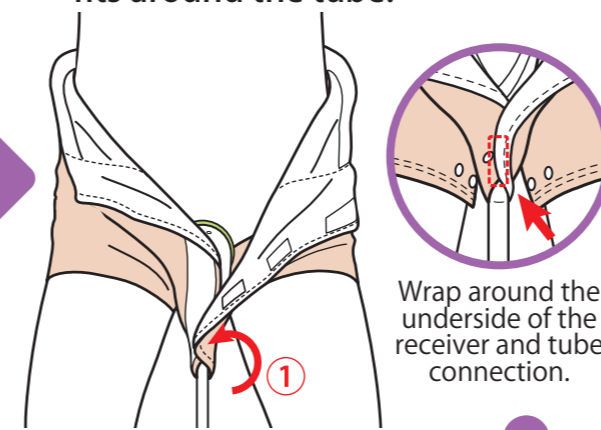
- 1** Put on the special underwear and undo all the velcro straps on the front.



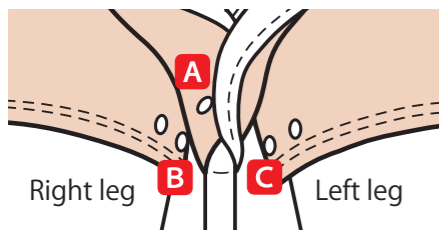
- 2** Fit the penis in the receiver (adjust the receiver).



- 3** Fasten the velcro strap at the lower end (item ①) so that it fits around the tube.

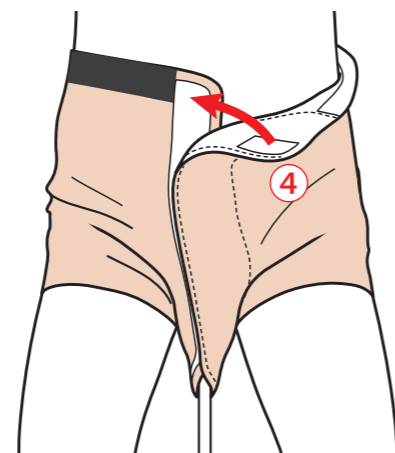


- 6** Fasten the button on the side where you want the tube to come out, and the process is complete.

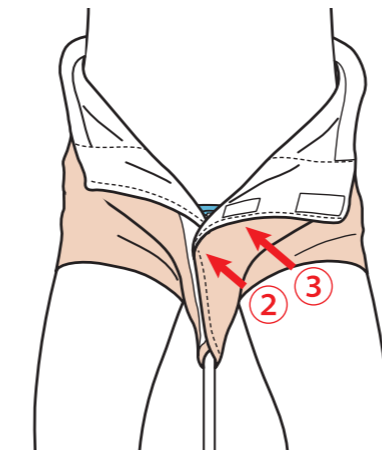


- Fasten **A** and **B** if you want the tube to follow the **Right** leg.
- Fasten **A** and **C** if you want the tube to follow the **Left** leg.

- 5** Fasten the velcro strap at the top (item ④).



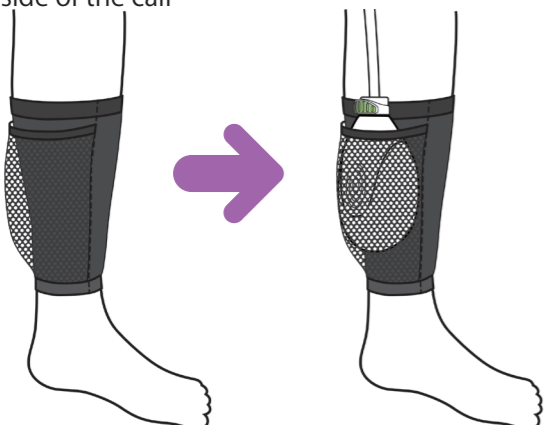
- 4** Fasten the velcro strap in the middle (item ②&③).



● How to use the special supporter

Put on the special supporter so that the pocket sits on the inside of the calf

Place the urine collection bottle inside the pocket

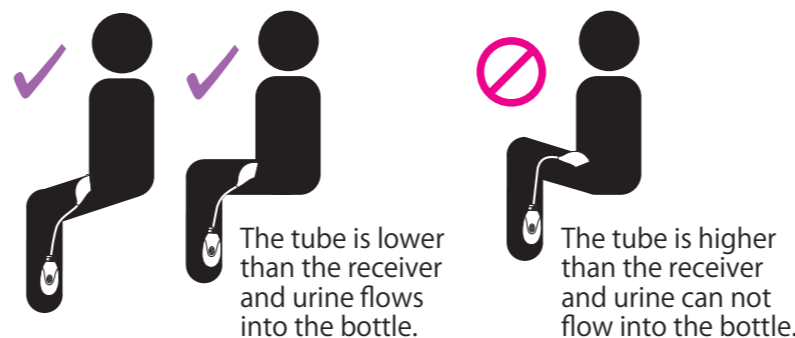


See here for a video on how to attach/detach the one-touch cap



Pay particular attention to the angle of the tube.

The device is designed to collect urine by using the pull of gravity. If the receiver is not in the highest position, urine will not flow properly into the urine collection bottle and may flow backwards.



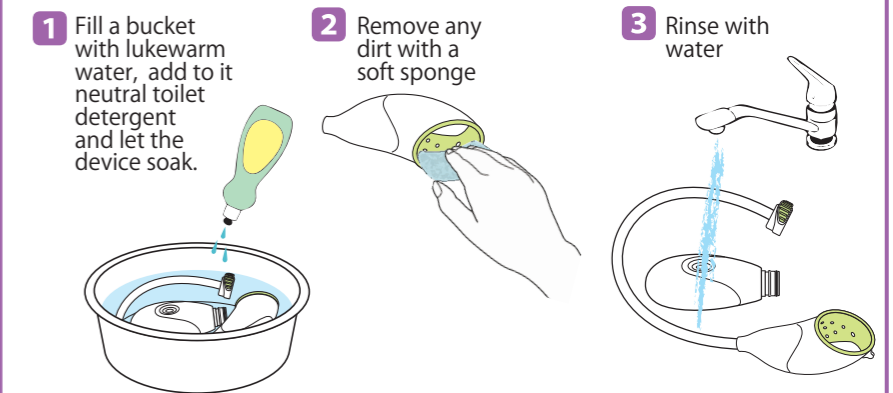
How to take care of

Daily care <Dirt removal, cleaning → disinfecting → rinsing → drying>

● Dirt removal, cleaning

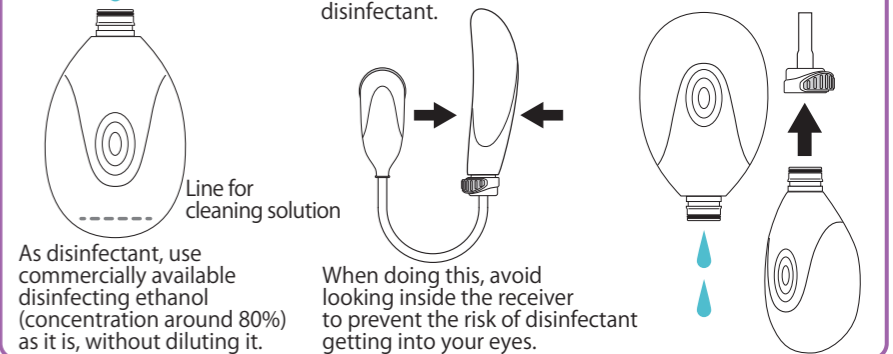
Soak for several minutes in a suitable container filled with neutral toilet detergent diluted in cold or lukewarm water, then wash with a soft sponge. To remove any dirt inside the urine collection bottle, use a toothbrush or similar tool.

Disassemble the inner and outer receivers before cleaning.



● Disinfecting

- 1 Pour disinfectant into the collection bottle and attach the tube.
- 2 Hold the collection bottle upside down, gently press the center of the bottle with your fingers several times, and wash the inside of the receiver with the disinfectant.
- 3 Complete the cleaning process by returning the bottle to its original position and disposing of the disinfectant. You can now reset it.



● Rinsing/drying

Rinse well with cold or lukewarm water and dry thoroughly in a shaded area.

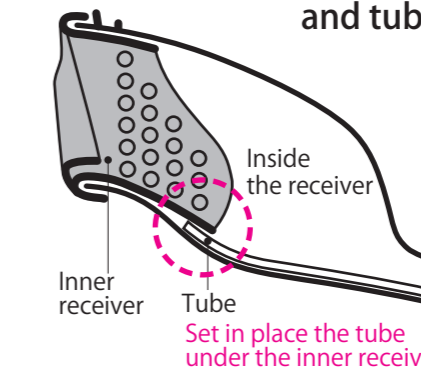
● Cleaning after use

After discarding the urine collected in the urine collection bottle, be sure to wash the bottle with water. If you are concerned about odors or dirt, wash the receiver frequently with water as necessary.

● Cleaning when particularly dirty

When impurities like urinary stones or protein particles are attached to the device after prolonged use, soak in citric acid solution (about 5%) for about 20 minutes to remove them and then wash thoroughly. Commercially available tablets for urine bottles can also be used.

How to assemble receiver and tube



Tip

Applying a lubricant like vaseline to the rubber O-ring attached to the opening of the urine collection bottle will make it easier to attach and detach it.

