



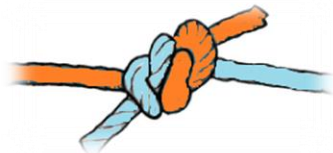
ASAHI HAND KNOTTER for Spandex yarn



Fisherman's Knotter for Spandex Yarn Type SS-3	dtex		Tail length mm	
			ex. 620 dtex	
	min	max	min	max
	310	940	8	10

THE VALUES IN TABLES ARE ONLY INDICATIVE, AS A REFERENCE.

Fisherman's



- • • Yarn cast off is not occurred as two loops pull each other.

Type SS-3

- • • Specially designed for spandex yarn knotting.
- • • One of the very few knotters to make tie with consistency for spandex yarn.

INSTRUCTION for Use

- 1 Hold the knotter with left hand.
- 2 Insert the yarns into the slits from the left side to the right side.
- 3 With the right hand, pull down the yarns to ensure they touch the bottom of the slits.
(At the moment of pushing the trigger, pull down yarns little bit more.)
- 4 Push the trigger to its full extent.
(At the moment of pushing the trigger, pull down yarn little bit more.)
- 5 Release the trigger and take the jointed yarn out gently.
(extra tips available on next page, to avoid fails/mis knotting)
- 6 Pull the yarn extracted from the knotter in the opposite direction to complete the knot.



Link to see movie



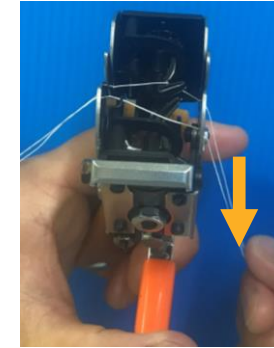
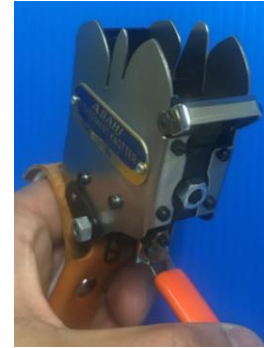
<https://youtu.be/ZiEHxDotEsc>



Type SS-3

INSTRUCTION for Use (extra tips)

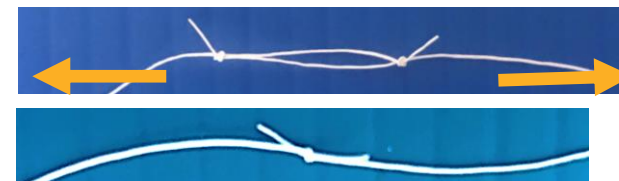
- 1 Hold the knotter with left hand.
- 2 Insert the yarns into the slits from the left side to the right side.
- 3 With the right hand, pull down the yarns to ensure they touch the bottom of the slits. (At the moment of pushing the trigger, pull down yarns little bit more.) Don't need to pull yarns too strongly. Give the two yarns equal tension.
- 4 Push the trigger to its full extent. (At the moment of pushing the trigger, pull down yarns little bit more. First movement of trigger action is yarn crossing movement by yarn crosser. At the time, pull yarns little bit more.)
- 5 Release the trigger and take the jointed yarn out gently. When you often face the fails (entangling yarn), take yarn before release the trigger. See photo or movie
- 6 Pull the yarn extracted from the knotter in the opposite direction to complete the knot.



Link to see movie

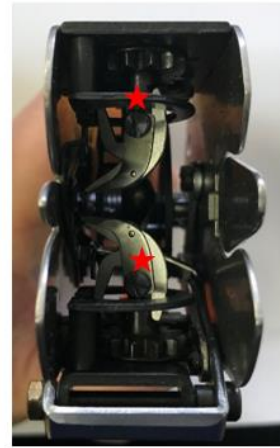


https://youtu.be/aZM8Y2gc_-8



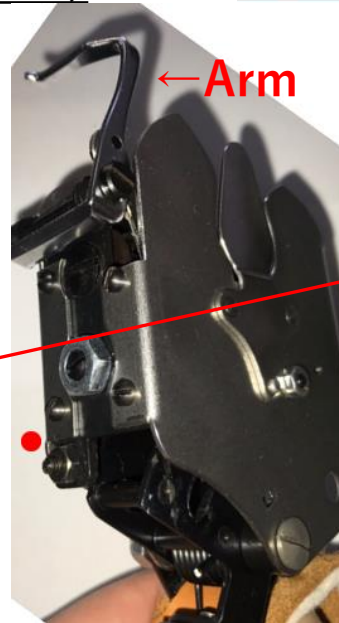
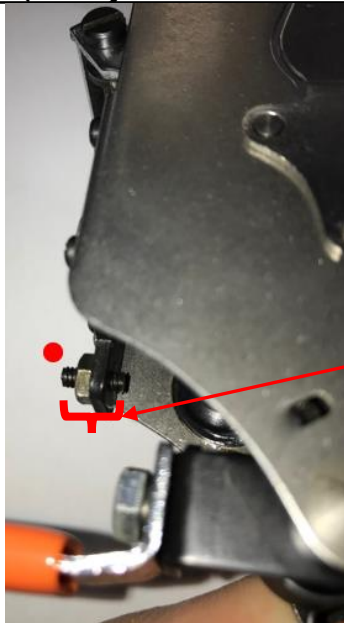
Daily check points

- All screws and nuts marked with star ★ must not be loosened.



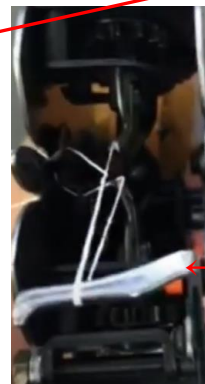
from top, in condition half push the trigger

(Adjustment (only when needed))



- The screw and nut marked with ● are used for adjusting the arm height. Untighten the nut, then adjust the position of the screw. If the screw position goes outward, the arm will pull up the yarns higher when pushing the trigger (applying higher tension for pre-knotting).

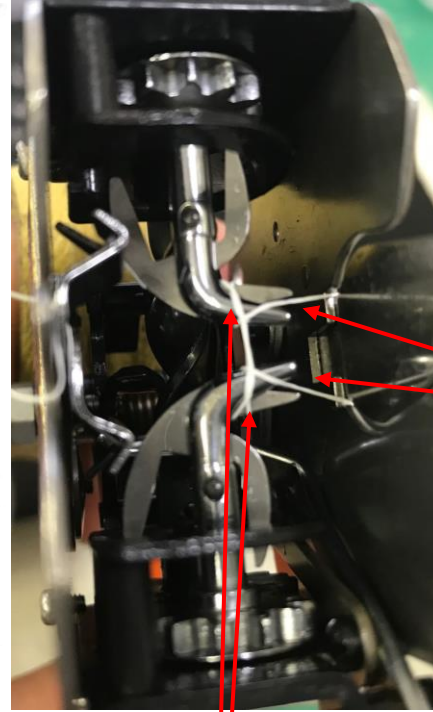
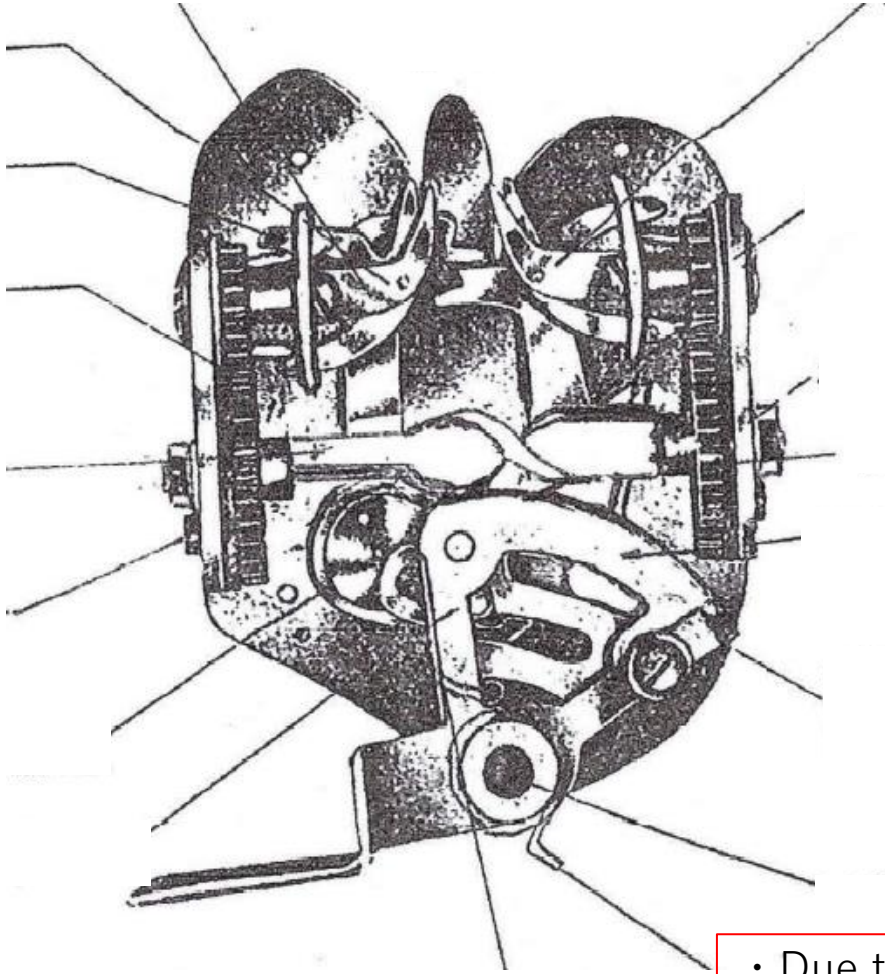
If the yarns are pulled up too high, it can cause them to break. Adjust it depending on the yarn dtex.



Arm

OILING

- Moving parts marked with lines should be lubricated once a every two months with a volatile substance such as Teflon.



the blade's sharpness decreases after 2-3 years of use, we recommend replacing the parts through the manufacturer.

- Due to the properties of spandex yarn, the yarn tends to have poor slippage on the surface indicated by the arrow. please apply a highly volatile lubricant every two months.

Note

- Do not drop the knotter or give impact to the knotter.
- Take off yarns gently when tangled up.
- Do not pull tangled yarns strongly when tangled up.
- Daily cleaning is required. Take off Cotton fly etc