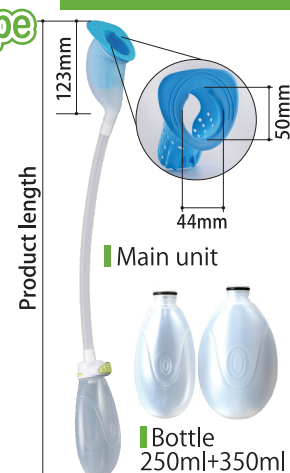


## What's included / Specifications

### Wearabletype

AS-URI  
S/M/L size



#### Optional parts



Model #: AS-URI (S/M/L)  
Weight: 145g (M size)

Size	I : Inseam H : Reference height L : Product length (with 250ml/350ml bottle)
S size	I : Up to 72cm H : Up to 160cm L : 55cm / 56.5cm
M size	I : 72 to 77cm H : 160 to 170cm L : 60cm / 61.5cm
L size	I : 77cm or longer H : 170cm or taller L : 65cm / 66.5cm

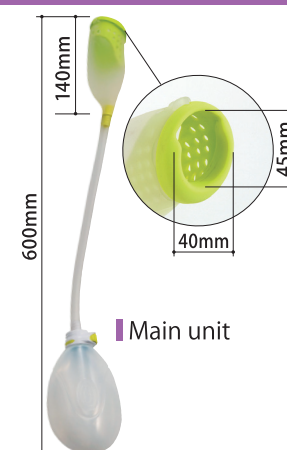
#### Material

• Receiver	Silicone
• Outer tube	Polyvinyl chloride(PVC)
• Inner tube	Silicone
• Bottle	Polyethylene(PE)
• Cap	Polyacetal(POM)
• Special garter	Polyester Polypropylene
• Special underwear	Polyester Cotton
• Special supporter	Polyester Tricot



### Wearabletype for wheelchairuse

AS-KUR010



Model #: AS-KUR010  
Weight: 200g (Main unit)  
Length: 60cm  
Underwear : Free size

#### Material

• Receiver	Silicone
• Outer tube	Polyvinyl chloride(PVC)
• Inner tube	Silicone
• Bottle	Polyethylene(PE)
• Cap	Polyacetal(POM)
• Special underwear	Polyester Cotton
• Special supporter	Nylon Polyurethane



### Wearabletype for sleeping position

AS-DUR010



Model #: AS-DUR010  
Receiver:  
Size: W5.8xD13.5xH6cm  
Weight: 70g  
Tank:  
Size: 30xD24xH11cm  
Weight: 390g  
Capacity: 2.8L  
Tube length: 1.5m  
Underwear : Free size

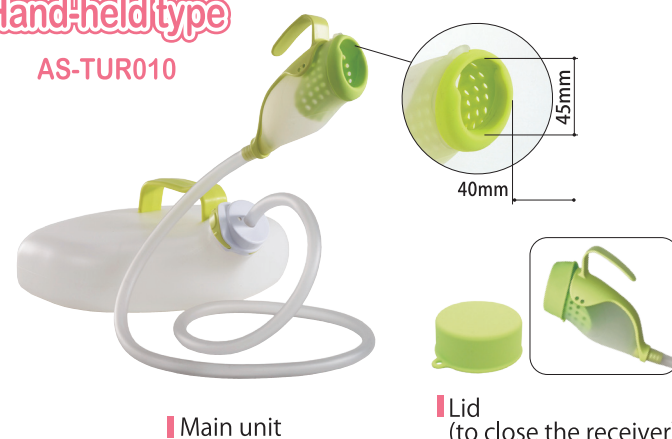
#### Material

• Receiver	Silicone
• Tube	Polyvinyl chloride(PVC)
• Cap	Polyacetal(POM)
• Tank	Polyethylene(PE)
• Membrane	Latex
• Special underwear	Polyester Cotton



### Hand-heldtype

AS-TUR010



Model #: AS-TUR010  
Receiver:  
Size: W5.8xD13.5xH6cm  
Weight: 70g  
Tank:  
Size: W30xD24xH11cm  
Weight: 390g  
Capacity: 2.8L  
Tube length: 1.5m

#### Material

• Receiver	Silicone
• Tube	Polyvinyl chloride(PVC)
• Cap	Polyacetal(POM)
• Tank	Polyethylene(PE)
• Handle	Polyacetal(POM)
• Lid	Silicone



## Men's urine collector

- Soft and comfortable silicone type
- Lightweight and prevents moist stuffy feeling
- Washable and reusable
- Reduces burden on caregivers

Website



**A wearable urinary collector for those who worry about having to go all the way to the bathroom.**

It is inconspicuous even when worn, so you can go outside with peace of mind.

AS-URI S/M/L

**A urinary collector made specifically for wheelchairs that was developed for wheelchair users.**

It reduces the anxiety and burden of having to go all the way to the bathroom, and you can go outside with a peace of mind.

AS-KUR010

**Wearable urinary collector for sleeping position.**

You can wear it to bed.

AS-DUR010

**A piece of mind that you do not need to go all the way to the bathroom.**

You can urinate on your own even in the middle of the night.

AS-TUR010

### Wearabletype



### Wearabletype for wheelchairuse



### Wearabletype for sleeping position



### Hand-heldtype





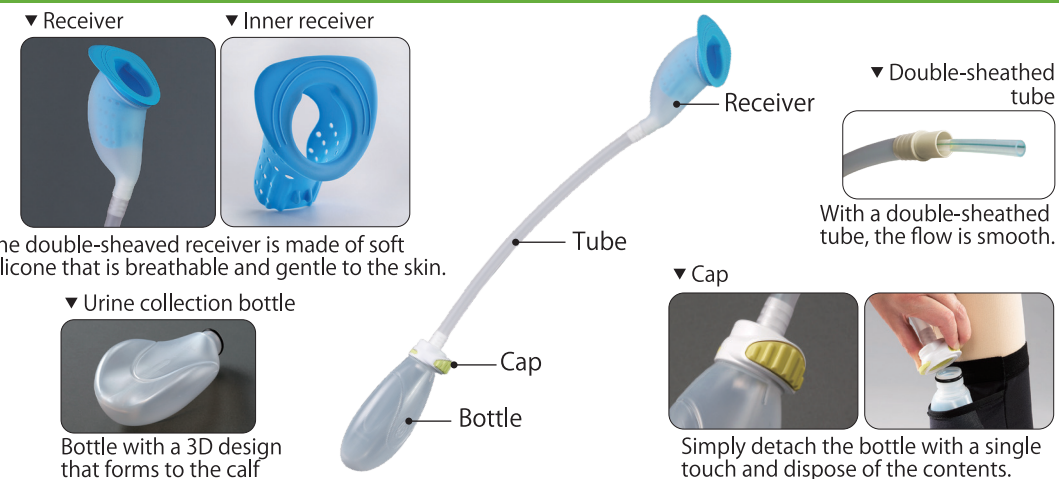
## Recommended users

## Product / Features

## How to use

### Wearable type

- For those who have problems with urinary incontinence
- For those who worry about a sudden urge to urinate
- Can be used in both standing and sitting positions
- For indoor/outdoor use  
You can wear it when going outdoors.

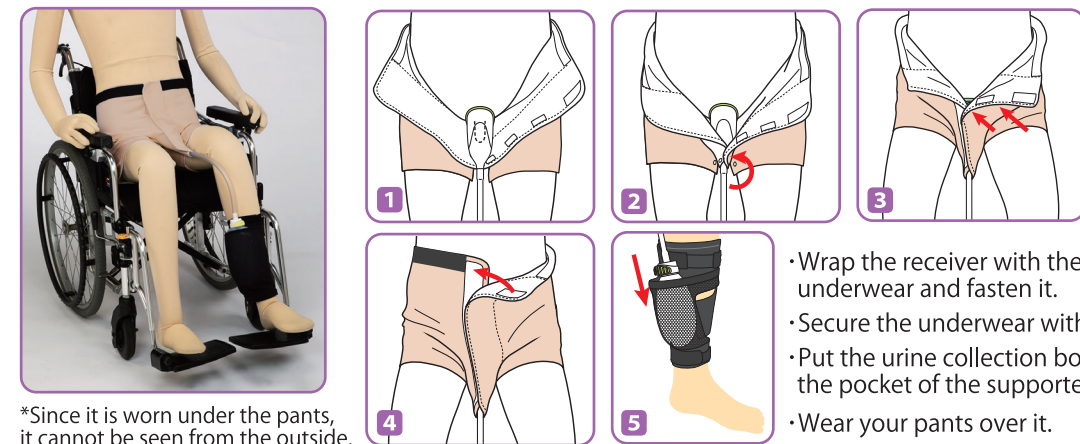
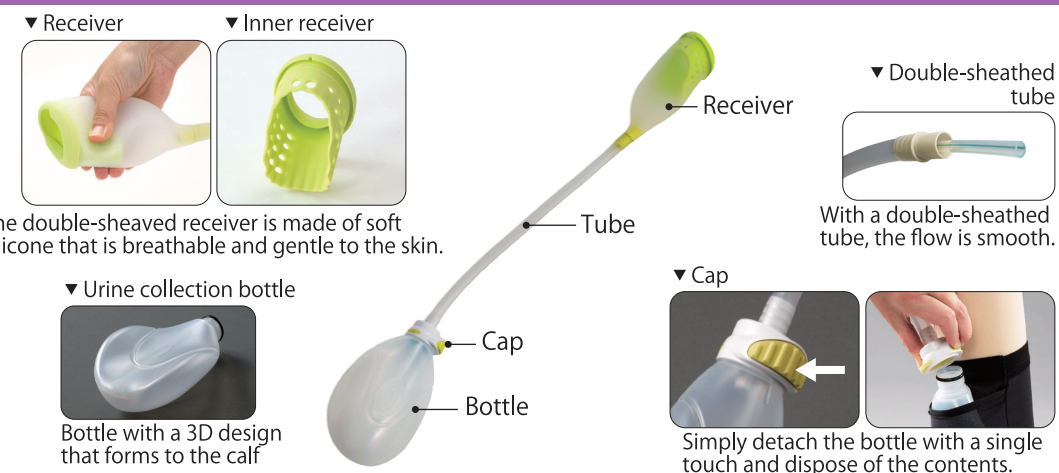


- Please make sure the flow track is unobstructed so that urine can flow smoothly during use.
- You need to make sure it is flowing downward naturally.
- After use, please wash and disinfect daily and let it dry.

AS-URI S/M/L

### Wearable type for wheelchair use

- For those who have problems with urinary incontinence
- For those who worry about a sudden urge to urinate
- Can use while in a wheelchair
- For indoor/outdoor use  
You can wear it when going outdoors.

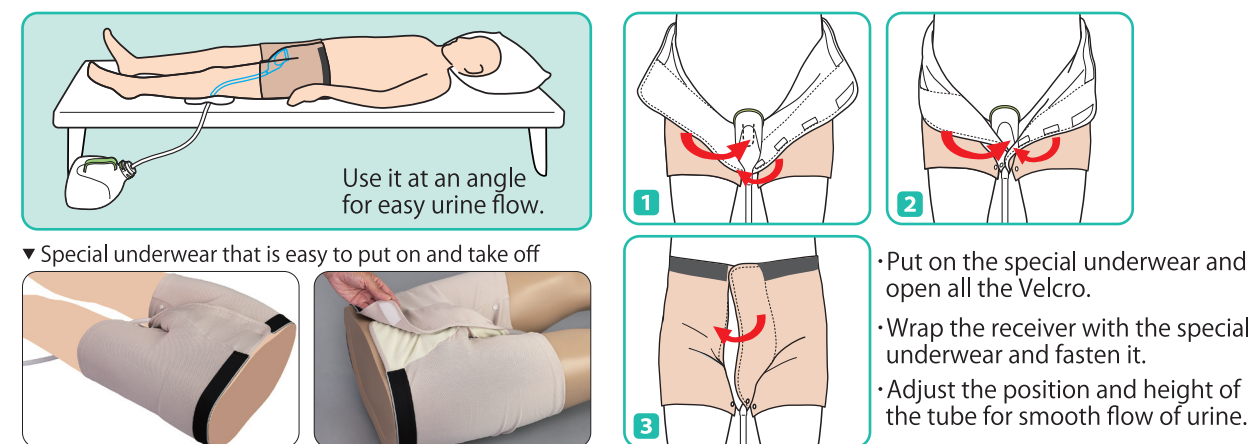
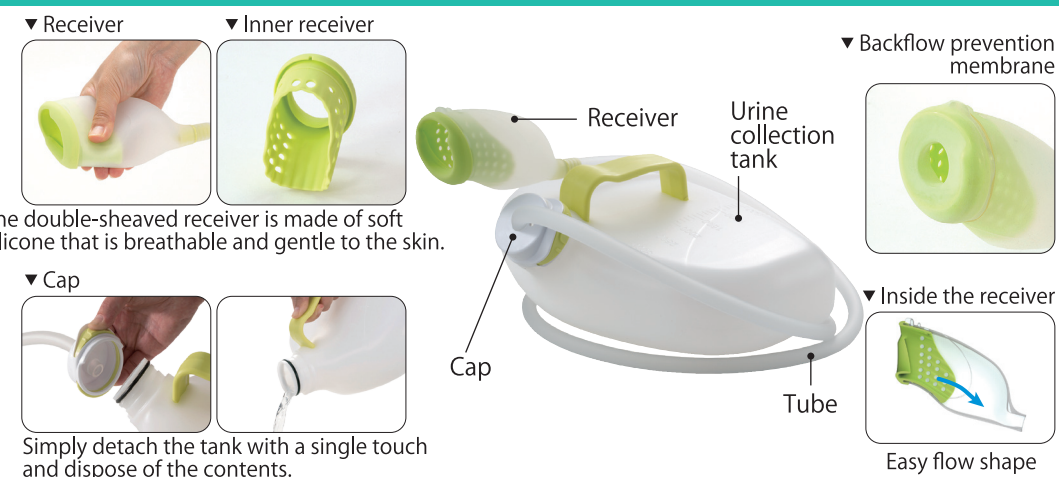


- Please make sure the flow track is unobstructed so that urine can flow smoothly during use.
- You need to make sure it is flowing downward naturally.
- After use, please wash and disinfect daily and let it dry.

AS-KUR010

### Wearable type for sleeping position

- For those who want to be able to urinate in a sleeping position
- You can wear it in a sleeping position.
- For indoor use

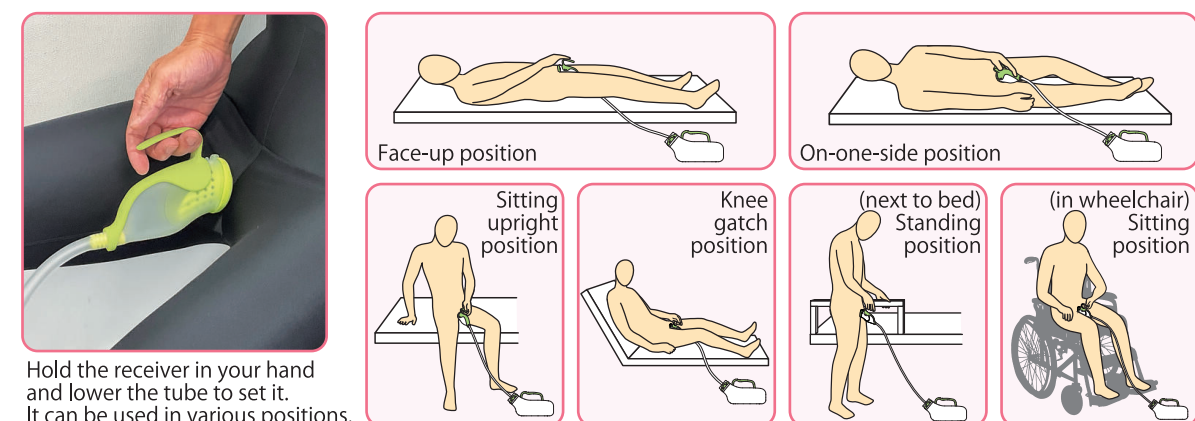
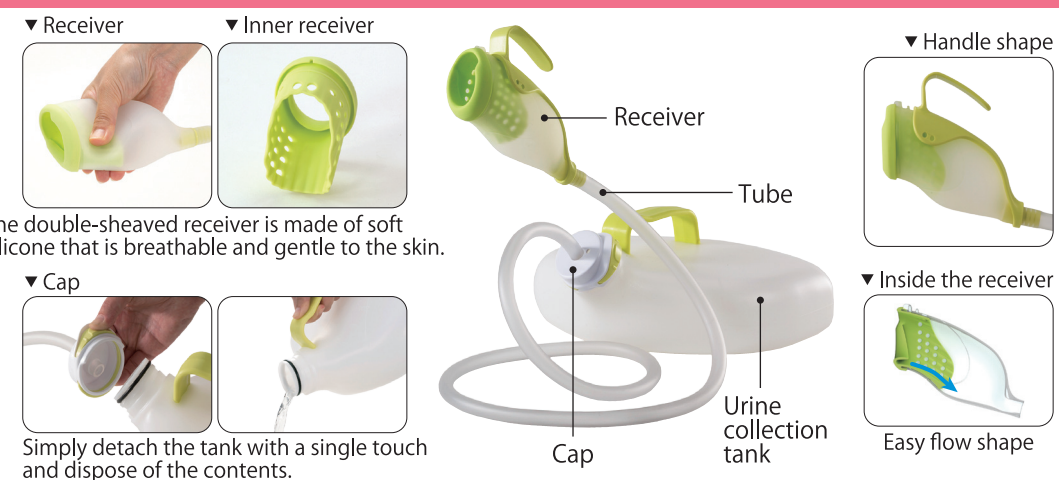


- Please make sure the flow track is unobstructed so that urine can flow smoothly during use.
- You need to make sure it is flowing downward naturally.
- Please wash and disinfect daily and let it dry.

AS-DUR010

### Hand-held type

- For those who want to use it at the bedside, etc.
- You can urinate without having to go all the way to the bathroom.
- It can be used in standing, sitting and supine positions
- For indoor use



- Please make sure the flow track is unobstructed so that urine can flow smoothly during use.
- You need to make sure it is flowing downward naturally.
- Please wash and disinfect daily and let it dry.

AS-TUR010