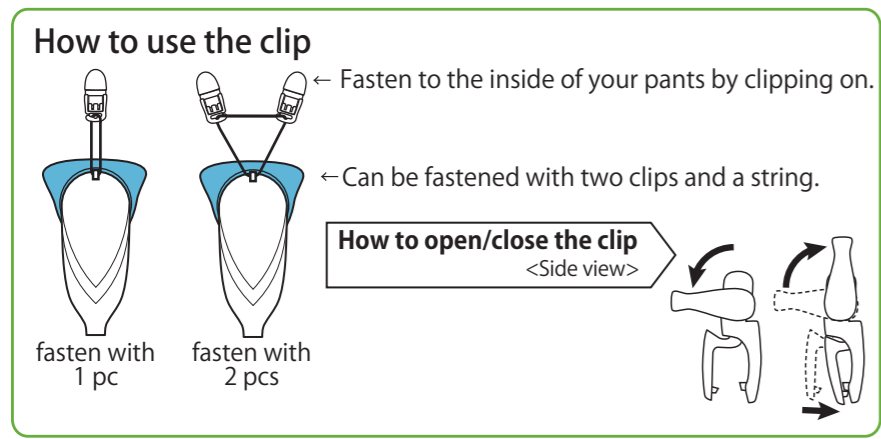
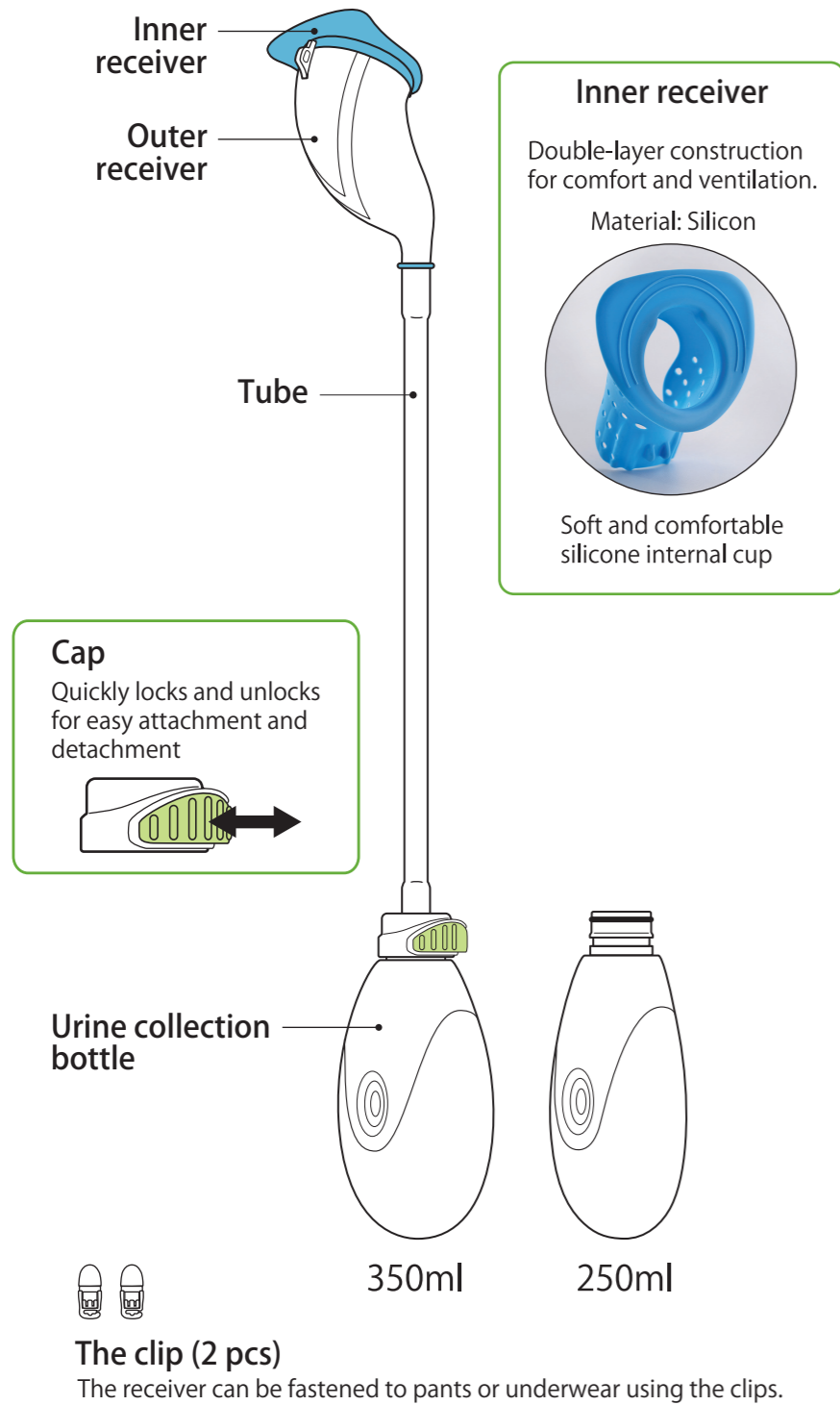


Part Names and Functions



Materials and Specifications

Materials

- Receiver: Silicone
- Outer tube: Polyvinyl chloride (PVC)
- Inner tube: Silicone
- Bottle: Polyethylene (PE)
- Cap: Polyacetal (POM)

Size

- Small**
- Inseam: Up to 72 cm
 - Reference height: Up to 160 cm
 - Length of device: 55 cm (with 250-ml bottle attached) / 56.5 cm (with 350-ml bottle attached)
- Medium**
- Inseam: 72 to 77 cm
 - Reference height: 160 to 170 cm
 - Length of device: 60 cm (with 250-ml bottle attached) / 61.5 cm (with 350-ml bottle attached)
- Large**
- Inseam: 77 cm or longer
 - Reference height: 170 cm or taller
 - Length of device: 65 cm (with 250-ml bottle attached) / 66.5 cm (with 350-ml bottle attached)

Warranty and Returns

This is a hygiene product, and returns are not accepted for any product used or worn. Be sure to check that you have the correct size by holding it up to your leg before removing it from the product packaging. If the product arrives damaged or with the incorrect size, please contact us within 10 days of arrival. We will replace it with a correct product at no shipping cost.

Precautions

- Before using the device, be sure to read this manual and fully understand its content.
- **It is recommended that you use the product at home where you can handle leaking until you become familiar with the device. Use the product with the appropriate method until you are familiar with its usage.**
- **Discontinue use of the product immediately if you experience any skin irritation.**
- **Prolonged wearing of the product may result in itching, rash, or other conditions depending on your body.**
- **Be sure to clean, disinfect, and dry all parts to prevent bacteria or mold, which can lead to odor or infection.**
- Use the product standing or sitting.
- Due to individual differences in body types and usage, we cannot guarantee that you will obtain the benefits and effects of this product.
- Use of this product does not guarantee elimination of problems due to incontinence.
- We are not responsible for any physical disability or other loss as a result of using this product in a manner other than recommended.
- We are not responsible for any problems occurring as a result of normal use, modifications, or improvements to this product.
- To ensure proper flow of urine in the product, use with the receiver positioned higher than the urine collection bottle.
- The recommended usage period is six (6) months. Use for longer periods will result in leaks and odor due to deterioration of the product.
- Store in a dry location at room temperature out of direct sunlight.

■ Design Registration
United States (US): No. 29/531,092
Japan (JP): 1530263
Europe (EU): 002675058-0001

■ Trademark Registration
Japan (JP): 5789413
Europe (EU): 1259233

Asahi Industry Co., Ltd.
1-11-22, YONBAN, ATSUTA-KU, NAGOYA, AICHI
TEL +81-52-671-5193 FAX +81-52-671-5196
<https://asahi-packaging.com/>

Men's wearable urine collector

S size:AS-URI010 M size:AS-URI011 L size: AS-URI012

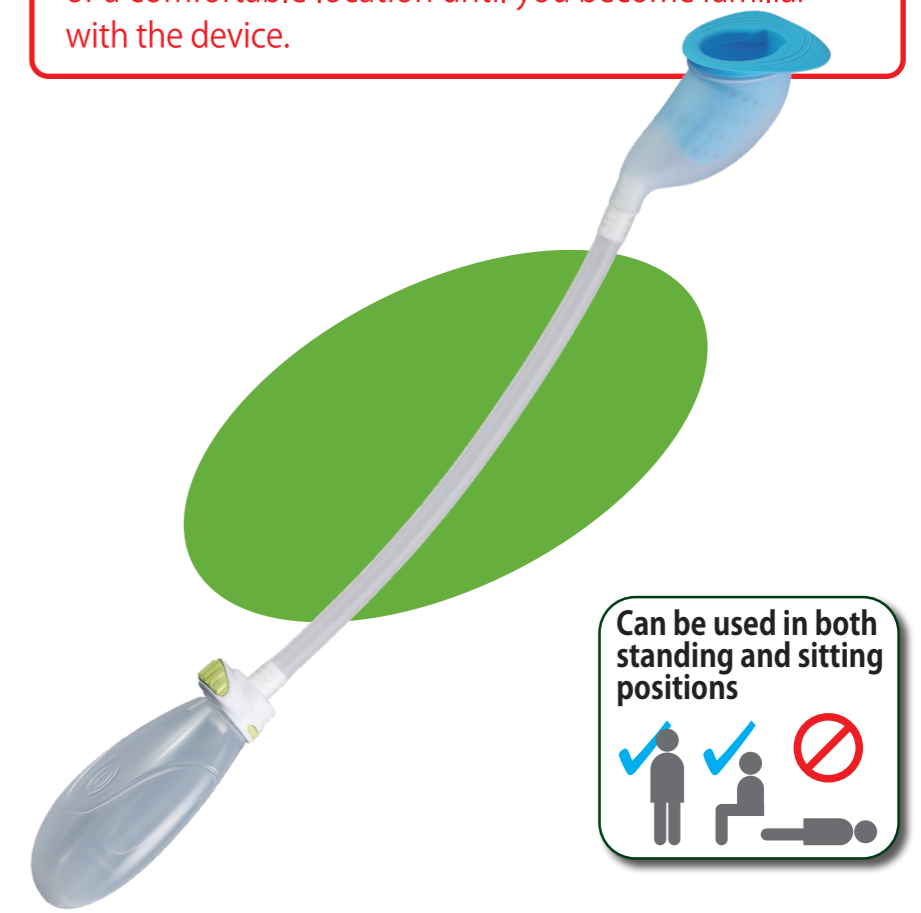
Patent No.4758516, design registration registered

Usage Guide

For comfortable use of this product, it is important to understand its features and how to use it correctly. You will have to adjust the location for attaching the device, specifically the clip, depending on your body frame and type.

It is important to use the device according to your body, especially if you notice leaking or incomplete emptying of the bladder at first use.

It is recommended that you use this product at home or a comfortable location until you become familiar with the device.



Before using the device, be sure to read this manual and fully understand its content. Please keep this manual handy for future reference.

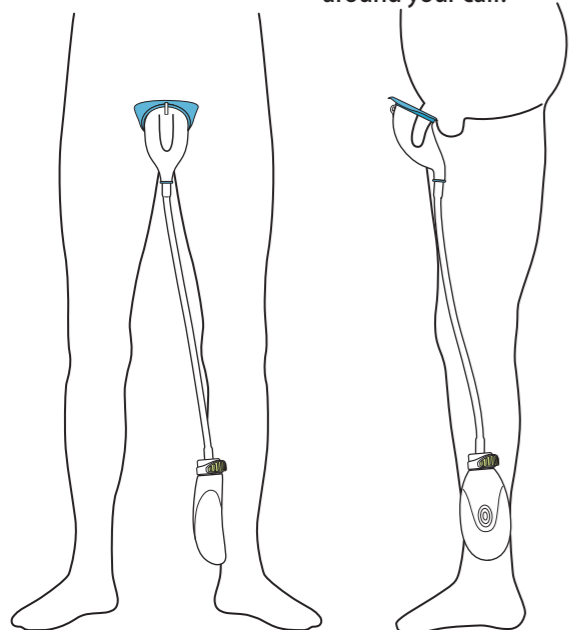
How to put on the device

Men's wearable urine collector AS-URI

Position

〈 Front view 〉
Place your penis in the receiver.

〈 Side view 〉
Place the tube along your leg and hold the urine collection bottle around your calf.



Change the angle of the urine bottle to a comfortable position.

Be careful of the tube angle.

The device collects down-flowing urine. When used in a sitting position, the receiver (penis) should be in the highest position to make urine flow down into the urine collection bottle smoothly.

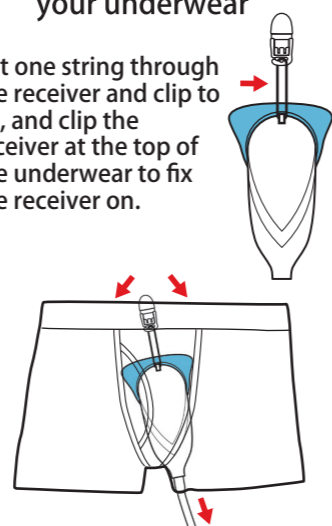


The tube should be lower than the receiver to allow urine to flow into the bottle. If the tube is higher than the receiver, it impedes the flow of urine into the bottle.

The receiver

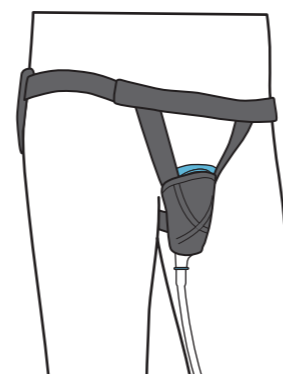
1 With your underwear

Put one string through the receiver and clip to tie, and clip the receiver at the top of the underwear to fix the receiver on.



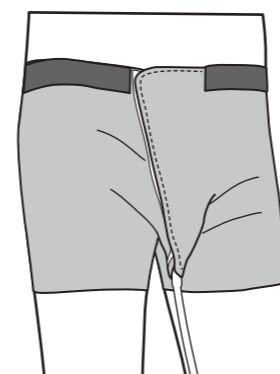
Take the tube out of the bottom of the underwear and run it along the leg.

2 With the special garter (Optional Item : MUR102)



Please check the instructions on the product package to learn how to use and put on.

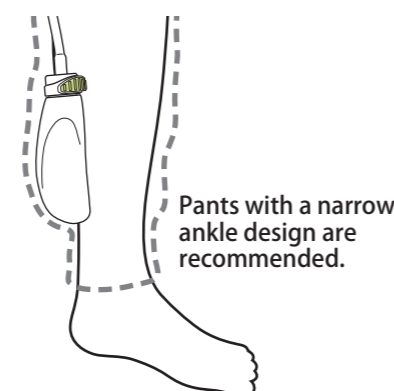
3 With the special underwear (Optional Item : KUR102)



Please check the instructions on the product package to learn how to use and put on.

The urine collection bottle

1 Without support



2 With the commercially available support



3 With the special support (Optional Item : MUR103)



Cleaning the device

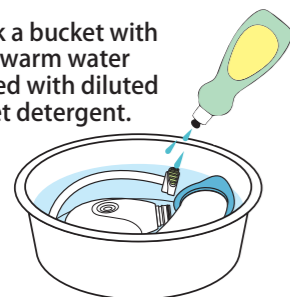
Daily cleaning

Removing stains > Disinfecting > Rinsing > Drying

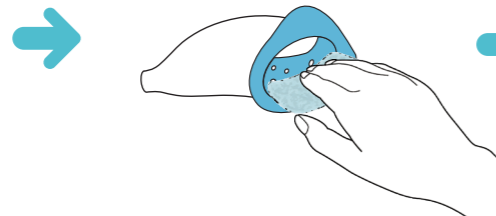
● Removing stains

Soak the product in a proper bucket of water or lukewarm water with diluted toilet cleaner for a few minutes, and then wash with a soft sponge. A toothbrush or similar tool is useful for cleaning dirt inside the bottle.

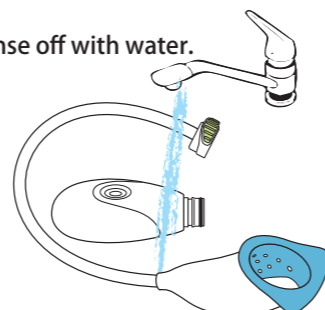
1 Soak a bucket with lukewarm water mixed with diluted toilet detergent.



2 Wash with a soft sponge.



3 Rinse off with water.



● Rinsing & Drying

Rinse well with water or lukewarm water, and dry well in a well-ventilated place away from direct sunlight.

● Cleaning after use

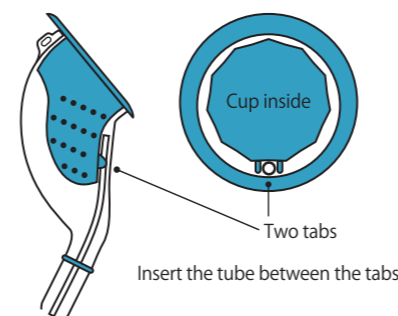
- Washing with water after use or when disposing stored urine in the bottle helps to prevent staining.
- If you notice an odor or stain, thoroughly rinse the receiver with water as needed.

● Cleaning stains

If there are stains after long use or due to urinary calculus, immerse the product for 20 minutes in citric acid solution (5% concentration) and then thoroughly clean.

Assembling the receiver and tube

To reassemble the receiver after cleaning, insert the end of the ventilation tube (inner tube) between the two tabs at the bottom of the inside cup.



Q&A

Frequently Asked Questions

- [Q] Can I use the device while lying down?**
You can use the product while standing or sitting. The product is designed to use gravity to collect urine. When using the product while sitting, the receiver (penis) must be positioned above the tube to allow urine to flow downward.
- [Q] Why is the cup (receiver) large?**
The cup is designed to be loose to ensure proper air flow.
- [Q] Can the device be used longer than six months?**
The tube, receiver, and packing will deteriorate, which may result in leaks if used longer than six months.
- [Q] How do I store it when not used for long periods?**
Follow the instruction manual on cleaning and drying the product, and then store in a clean location away from high temperature and humidity without bending the tube.
- [Q] What is the capacity of the urine collection bottle?**
You can choose from a smaller bottle (approximately 250 ml) or a larger bottle (approximately 350 ml). There is also the optional 600 ml bottle.
- [Q] How often does it need to be cleaned?**
It is recommended that the device be cleaned after each urination. If the device is left in an unsanitary condition, the risk of infection increases.

Type of underwear suitable for attaching the device

When you attach the device to your own underwear, choose a type of underwear that fits easily to your body to help stabilize the receiver.



Tips

Apply lubricant such as Vaseline to the rubber O-ring at the spout of the urine collection bottle for smoother attachment and removal.

O-ring

