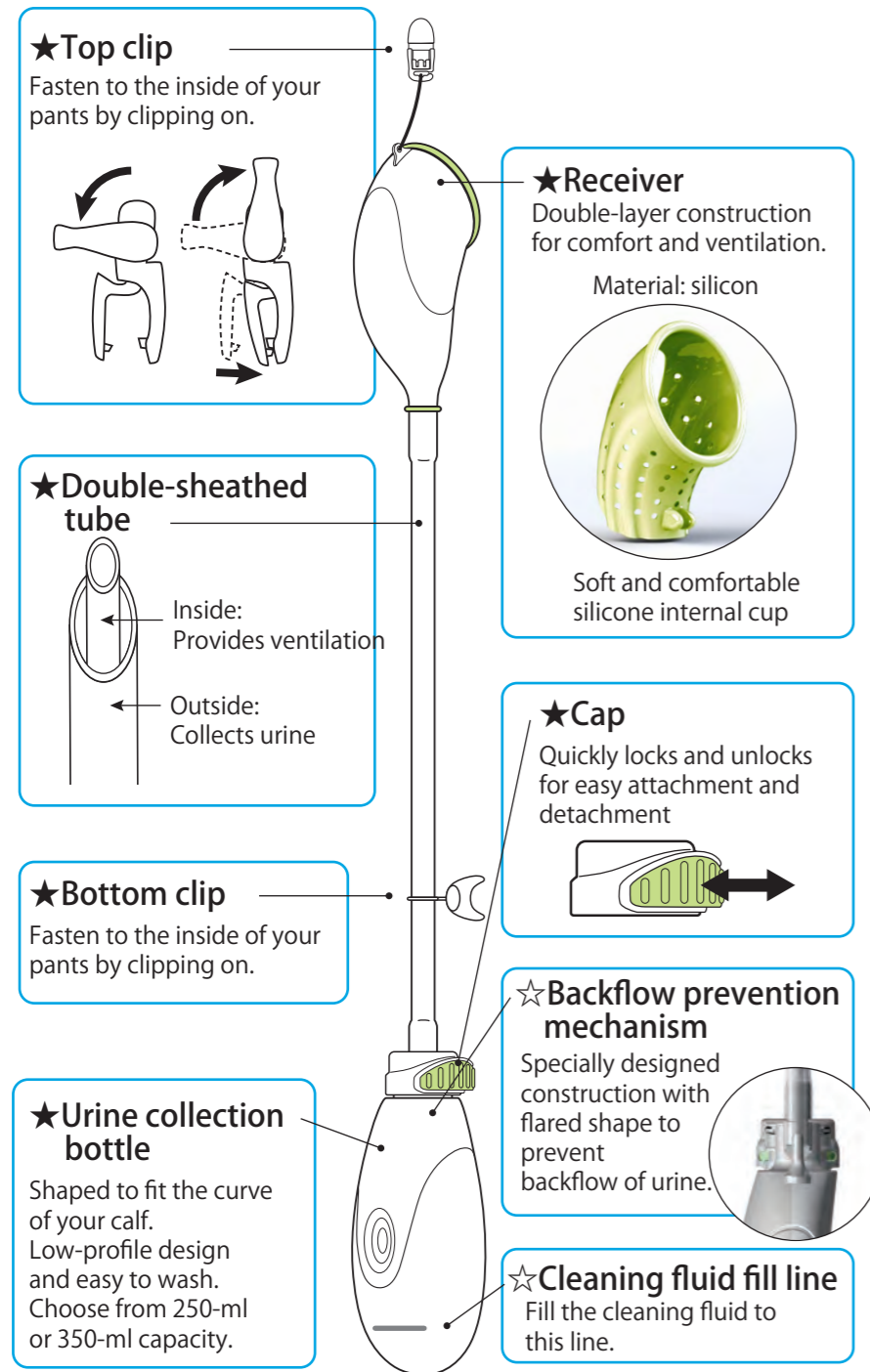
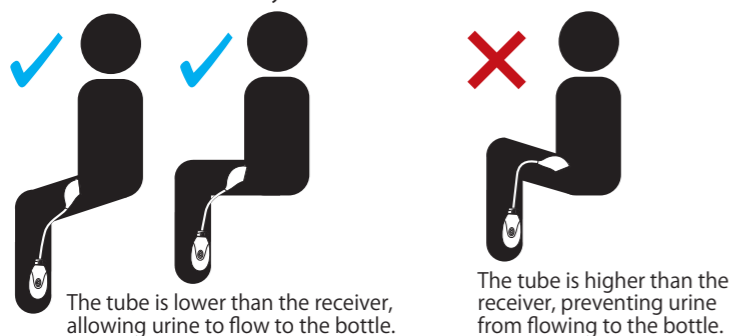


## Part Names and Functions



### Be careful of the tube angle.

The device uses gravity to collect urine. When using the product while sitting, be sure to position yourself so that the receiver (penis) is at the highest location so that urine can easily flow to the urine collection bottle.



## Materials and Specifications

### Materials

- Receiver: silicone
- Outer tube: polyvinyl chloride (PVC)
- Inner tube: silicone
- Bottle: polyethylene (PE)
- Cap: polyacetal (POM)
- Clip (body): polystyrene (PS)
- Clip (spring): stainless steel (SUS 304)

### Size

(Total length does not include the top clip)

#### Small

- Inseam: Up to 72 cm
- Reference height: Up to 160 cm
- Length of device: 55 cm (with 250-ml bottle attached) / 56.5 cm (with 350-ml bottle attached)

#### Medium

- Inseam: 72 to 77 cm
- Reference height: 160 to 170 cm
- Length of device: 60 cm (with 250-ml bottle attached) / 61.5 cm (with 350-ml bottle attached)

#### Large

- Inseam: 77 cm or longer
- Reference height: 170 cm or taller
- Length of device: 65 cm (with 250-ml bottle attached) / 66.5 cm (with 350-ml bottle attached)

## Warranty and Returns

This is a hygiene product, and returns are not accepted for any product used or worn.

Be sure to check that you have the correct size by holding it up to your leg before removing it from the product packaging. If the product arrives damaged or with the incorrect size, please contact us within 10 days of arrival.

We will replace it with a correct product at no shipping cost.

## Precautions

- Before using the device, be sure to read this manual and fully understand its content.
- **It is recommended that you use the product at home where you can handle leaking until you become familiar with the device. Use the product with the appropriate method until you are familiar with its usage.**
- **Discontinue use of the product immediately if you experience any skin irritation.**
- **Prolonged wearing of the product may result in itching, rash, or other conditions depending on your body.**
- **Be sure to clean, disinfect, and dry all parts to prevent bacteria or mold, which can lead to odor or infection.**
- Use the product standing or sitting.
- Due to individual differences in body types and usage, we cannot guarantee that you will obtain the benefits and effects of this product.
- Use of this product does not guarantee elimination of problems due to incontinence.
- We are not responsible for any physical disability or other loss as a result of using this product in a manner other than recommended.
- We are not responsible for any problems occurring as a result of normal use, modifications, or improvements to this product.
- To ensure proper flow of urine in the product, use with the receiver positioned higher than the urine collection bottle.
- The recommended usage period is six (6) months. Use for longer periods will result in leaks and odor due to deterioration of the product.
- Store in a dry location at room temperature out of direct sunlight.

■ Design Registration  
United States (US): No. 29/531,092  
Japan (JP): 1530263  
Europe (EU): 002675058-0001

■ Trademark Registration  
Japan (JP): 5789413  
Europe (EU): 1259233

**Asahi Industry Co., Ltd.**

1-11-22, YONBAN, ATSUTA-KU, NAGOYA, AICHI  
TEL +81-52-671-5193 FAX +81-52-671-5196

<http://www.asahi-sg.co.jp>

# Men's wearable urine collector

S size: AS-URI010 M size: AS-URI011 L size: AS-URI012

Patent No.4758516, design registration registered

## Usage Guide

For comfortable use of this product, it is important to understand its features and how to use it correctly. You will have to adjust the location for attaching the device, specifically the clip, depending on your body frame and type.

It is important to use the device according to your body, especially if you notice leaking or incomplete emptying of the bladder at first use.

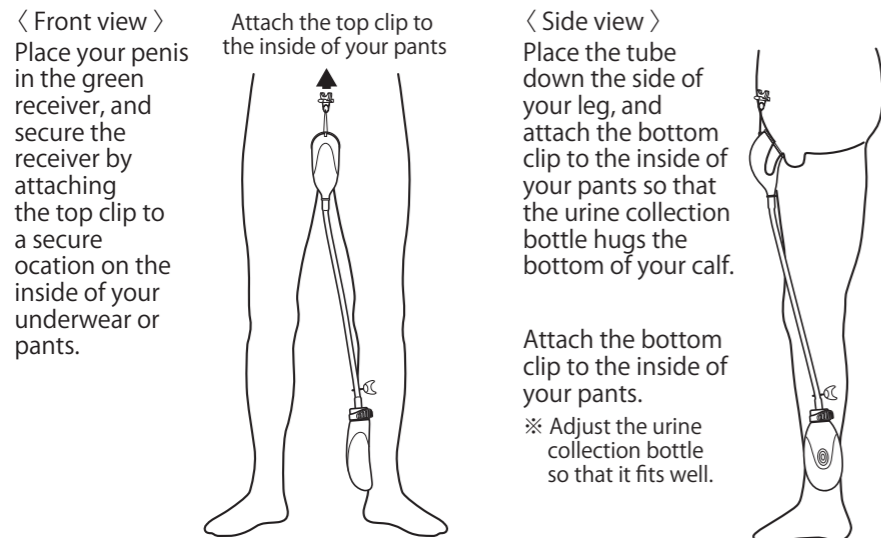
It is recommended that you use this product at home or a comfortable location until you become familiar with the device.



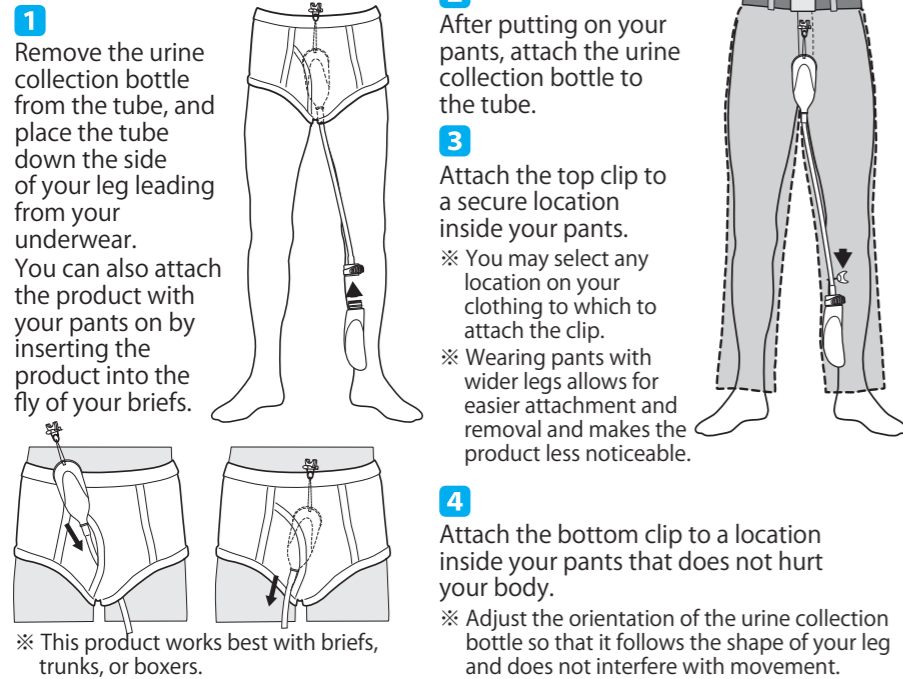
Before using the device, be sure to read this manual and fully understand its content. Please keep this manual handy for future reference.

## Wearing the device

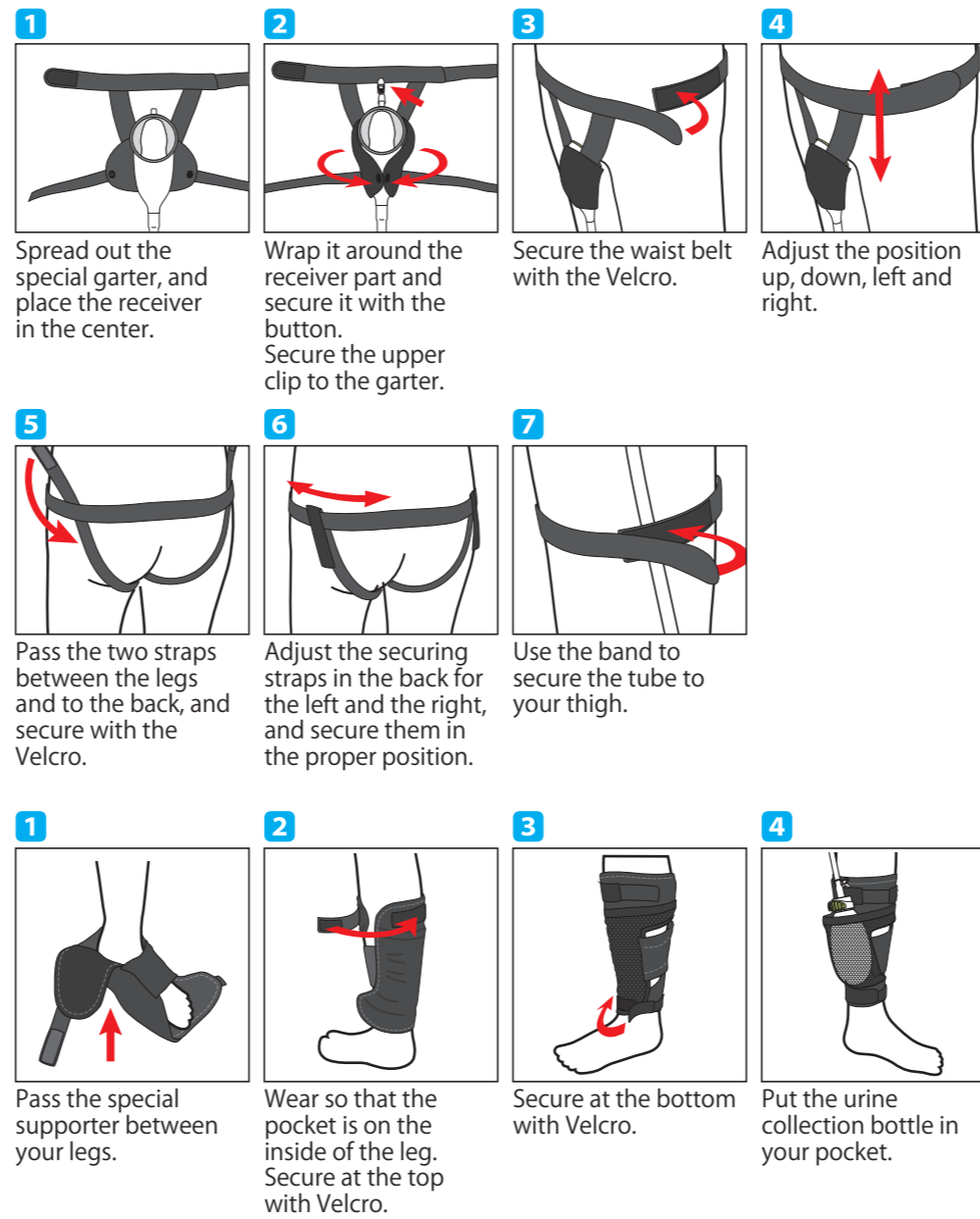
### Wearing it on the body without garter or supporter.



### Attaching the device



### How to wear the garter and the supporter



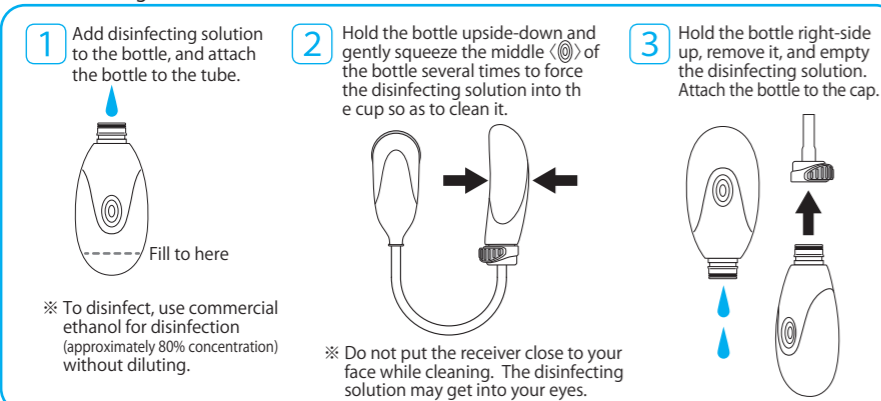
## Cleaning the device

### Daily cleaning

- Immerse the product in an appropriate container filled with cold or warm water and diluted toilet cleaner for several minutes, and then wash with a soft sponge.

### Cleaning when outside

- Empty the contents of the urine collection bottle and rinse with water. Alternatively, add alcohol-based disinfecting solution to the urine collection bottle, gently squeeze the bottle several times by hand, and then clean and disinfect the tube and inside of the receiver. (See the figure below)



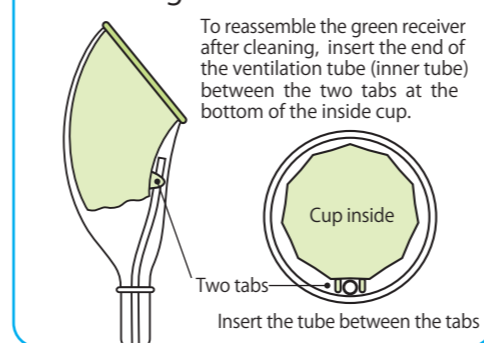
### Cleaning while attached

- Empty the urine from the urine collection bottle, and rinse the bottle with water.
- If you notice an odor or stain, thoroughly rinse the receiver with water as needed.

### Cleaning stains

- If there are stains after long use or due to urinary calculus, immerse the product for 20 minutes in citric acid solution (5% concentration) and then thoroughly clean.

### Assembling the receiver and tube



- Discontinue use of the product immediately if you experience any skin irritation.
- Be sure to clean, disinfect, and dry all parts to prevent bacteria or mold, which can lead to odor or infection.
- Use the product standing or sitting.
- To ensure proper flow of urine in the product, use with the receiver positioned higher than the urine collection bottle.
- The recommended usage period is six (6) months. Use for longer periods will result in leaks and odor due to deterioration of the product.
- Store in a dry location at room temperature out of direct sunlight.

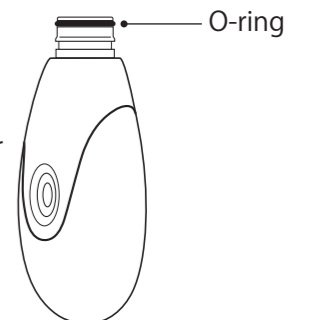
# Q&A

## Frequently Asked Questions

- [ Q ] Can I use the device while lying down?  
You can use the product while standing or sitting. The product is designed to use gravity to collect urine. When using the product while sitting, the receiver (penis) must be positioned above the tube to allow urine to flow downward.
- [ Q ] Why is the cup (receiver) large?  
The cup is designed to be loose to ensure proper air flow.
- [ Q ] Can the device be used longer than six months?  
The tube, receiver, and packing will deteriorate, which may result in leaks if used longer than six months.
- [ Q ] How do I store it when not used for long periods?  
Follow the instruction manual on cleaning and drying the product, and then store in a clean location away from high temperature and humidity without bending the tube.
- [ Q ] What is the capacity of the urine collection bottle?  
You can choose from a smaller bottle (approximately 250 ml) or a larger bottle (approximately 350 ml).
- [ Q ] How often does it need to be cleaned?  
If the product is left in an unsanitary condition, there is an increased risk of infection. It is recommended that you clean it each time after you empty your bladder.
- [ Q ] Why does it come in different sizes?  
The length of the tube varies according to your height (inseam).  
Size guide  
Small: Inseam of up to 72 cm (Reference height: Up to 160 cm)  
Medium: Inseam of 72 to 77 cm (Reference height: 160 to 170 cm)  
Large: Inseam of 77 cm or longer (Reference height: 170 cm or taller)
- [ Q ] Where do I attach the clips?  
Attach the clips to your underwear, pants, outer garment, or under garments as needed.

### Useful Tip

Apply Vaseline or other lubricant to the rubber O-ring at the mouth of the urine collection bottle for easier attachment and removal.



- After cleaning, allow the product to thoroughly dry in a well-ventilated location away from direct sunlight before storing.