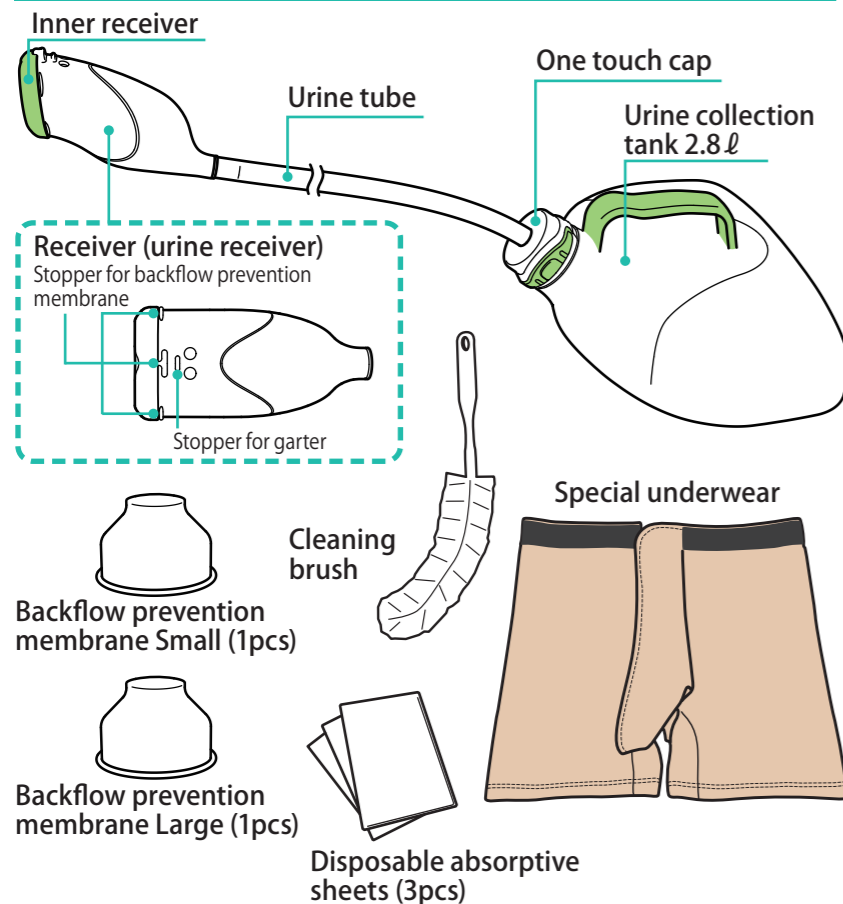


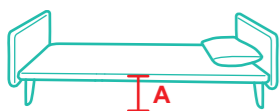
## Names of each part and included accessories



## Tube length adjustment and tube insertion methods

The tube is included with a length of 150cm. Referring to [ Table 1 ] below, please cut it to the appropriate length and insert it into the tank. [ Figure 1 ]

### ■ Bed



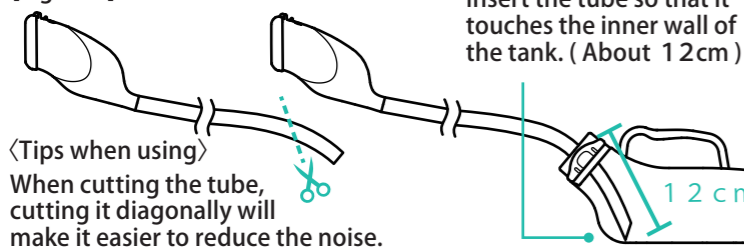
### ■ Futon



[ Table 1 ] Tube length reference

Height of bedding surface (A)	Tube length
① About 15cm	97 ~ 105cm
② About 40cm	105 ~ 113cm
③ About 50cm	115 ~ 123cm
④ About 60cm	130 ~ 138cm

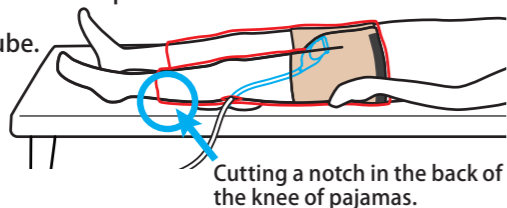
[ Figure 1 ] Tube insertion method



## About the installation of the receiver

### < Tips when using >

- The hook and loop tapes on the special underwear should be loosely fastened rather than tightly fastened. The receiver can be easily facing downward and less stressful to the skin.
- When using the device in the supine position, it is recommended to attach a backflow prevention membrane.
- Prepare slightly large underwear and pants that will be work over the device and avoid excessive bending or folding of the tube. In some cases you may be able to improve urine flow by cutting a notch in underwear or pants.



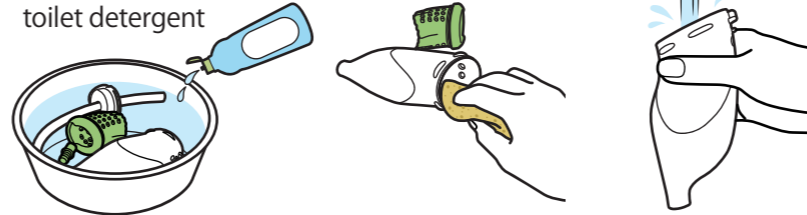
## How to maintain < dirt removal washing → sterilization → rinsing → drying >

Please be sure to perform maintenance every day.

### ● Dirt removal washing

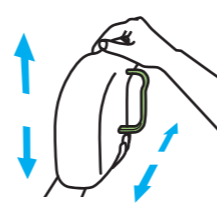
[ Receiver tube ] ※ Please disassemble the inner and outer receiver tubes.

- 1 Draw tepid water into a bath tub, etc., and let it soak for a while in a mixture of water and mild toilet detergent
- 2 Remove dirt with a soft sponge
- 3 Rinse off with water



[ Urine collection tank ]

Insert water, shake in all directions, and rinse out.  
※ If it is especially dirty, please use a cleaning brush.



[ Garter ]

Hand wash with detergent, then leave out in the shade to dry.

### ● Sterilization

Please sterilize inside the receiver using a commercially available alcohol-based disinfectant.

### ● Rinsing and drying

Rinse well with cold or tepid water, then allow to dry completely in the shade.

### ● When dirt is visible

Long term use can lead to urinary stones, protein, etc. to build up. In such cases please remove the dirt by soaking for about 20 minutes in a solution of citric acid (about 5%) and then washing. You can also use commercially available urinal tablets.

## Materials

- Receiver/silicone
- Tube/PVC
- Tank/Polyethylene
- Cap/Polyacetal (POM)
- Backflow prevention membrane/latex
- Special underwear/Polyester 76%, Cotton 24%

## Warranty and returns

※ Returning and exchanging products

For hygienic purposes, products which have been used or worn cannot be returned.

## Notes of caution



- If redness, etc. is observed on the skin, please cease use immediately.
- Until you get used to using the product, please lay out the provided disposable absorbent sheets, etc. under the person's lower back and practice to avoid leaks.
- If worn for long periods of time, it could result in steamed and it may hurt the skin. Please remove the receiver once or twice a day to clean and sanitize the area.
- To prevent the propagation of bacteria and mold that can lead to odor and infection, take sufficient care in sanitizing the product by washing, sanitizing, and drying the parts, etc. Also, reusing on other people is prohibited.
- Please use lying down (facing up or to the side).
- The expressions displayed on this product and the reproducibility of effects will vary by person, and do not necessarily constitute a guarantee of benefits or effects.
- We cannot provide support for problems occurring when this product is used with modifications, alterations, etc. added.
- In order to ensure urine flow, please mount with the height difference between the receiver and the urine collection tank.
- Store out if direct sunlight at room temperature in a dry place.

# Men's wearable urine collector for sleeping position

AS-DUR010

## Usage Guide

For comfortable use of this product, it is important to understand its features and how to use it correctly. You will have to adjust the location for attaching the device depending on your body frame and type. It is important to use the device according to your body. Even if you have a leak when you first start using it, it is important to continue using it until you learn and devising how to use it well to urinate.



The device is mainly meant to be used in a lying position



Before using the device, be sure to read this manual and fully understand its content. Please keep this manual handy for future reference.

Asahi Industry Co., Ltd.

1-11-22, YONBAN, ATSUTA-KU, NAGOYA, AICHI  
TEL +81-52-671-5193 FAX +81-52-671-5196  
asahi-packaging.com

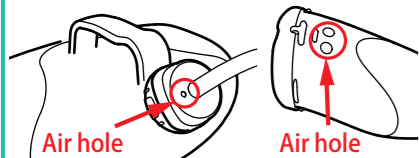
## Basic way to use



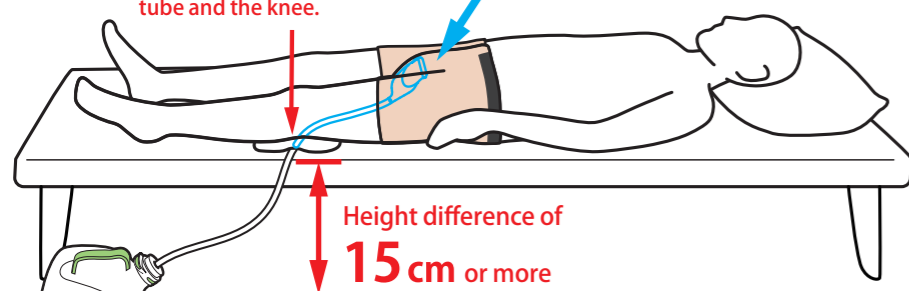
When using

- Until you get used to using the product, please lay out the provided disposable absorbent sheets under the person to avoid getting bedding dirty in the case of an accident.
- If worn for long periods of time, it could result in steamed and it may hurt the skin. Please remove the receiver once or twice a day, wipe the penis with lukewarm water, dry, and perform skin care.
- The urine collector cannot be used for those who will remove it from themselves or those with forceful body movements.

★ Make sure the tank and receiver air holes are not blocked

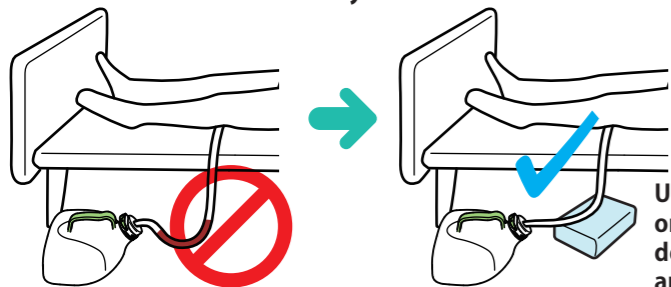


Pass the tube behind the knees, and lay a towel between the tube and the knee.



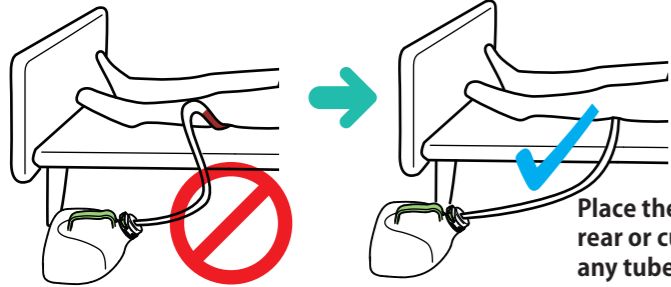
★ Make sure a height difference of 15cm or more is secured between the floor and the tube.

★ Make sure there are no valley bends in the tube



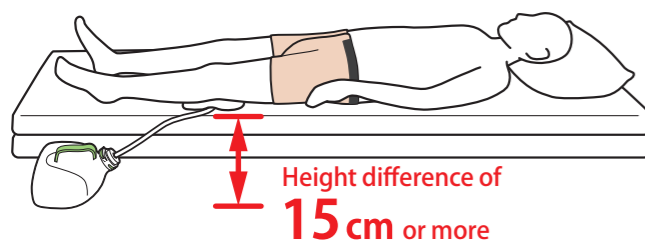
Use an empty box or other object under the tube to fix any valley bends

★ Make sure there are no mountain bends in the tube



Place the urine tank in the rear or cut the tube to fix any tube mountain bends

Use diagram when sleeping on futon



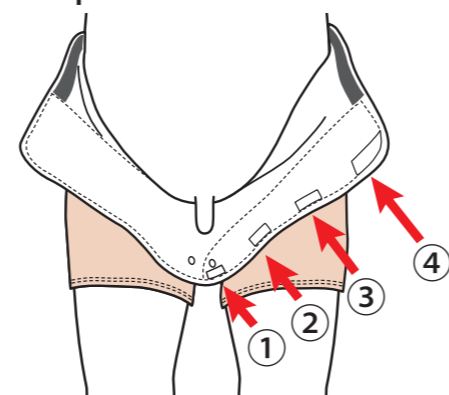
〈Tips when using〉  
When using in a futon, please lay 2 underquilts or lay a mattress under-neath the underquilt to secure the 15cm height difference or more.

This urine collector requires a smooth flow of urine from the receiver to the tank. Before use, please make sure you have met all the requirements in [★Points] below.

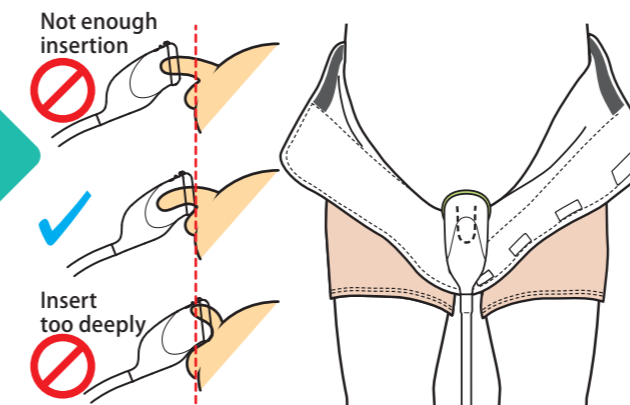
★ Refer to "How to install the receiver 2" and check the position of the receiver and penis.

## How to mount the receiver

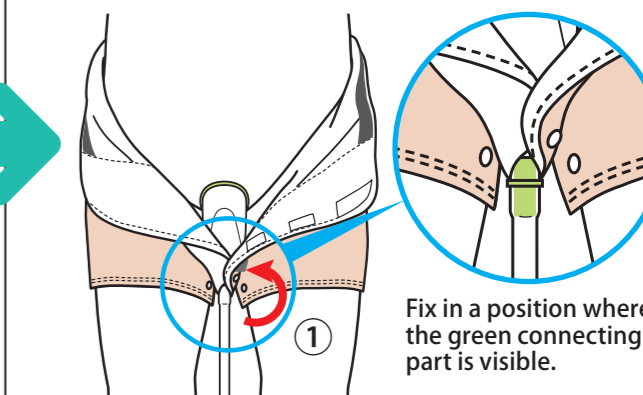
1 Put on the special underwear and open all the hook and loop tapes on the front.



2 Place the penis inside the receiver.

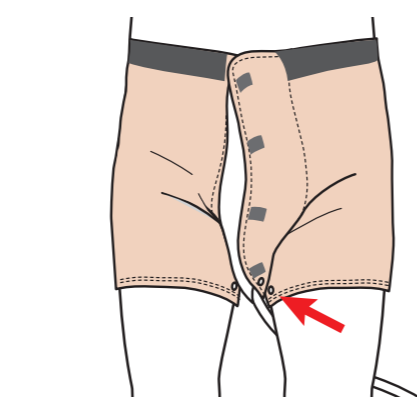


3 Fasten the hook and loop tape (1) that wraps around the bottom of the receiver.

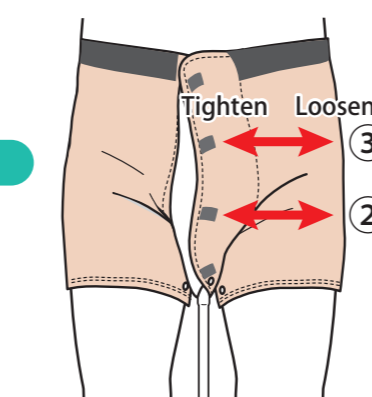


Fix in a position where the green connecting part is visible.

6 Fasten the button at the bottom on the side you intend to the tube out.

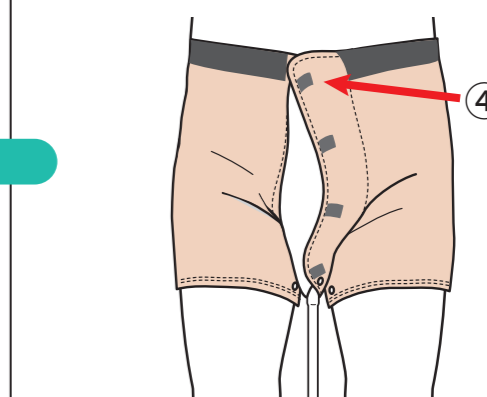


5 Next, fasten the hook and loop tapes of (2) and (3) without stretching them too tight.



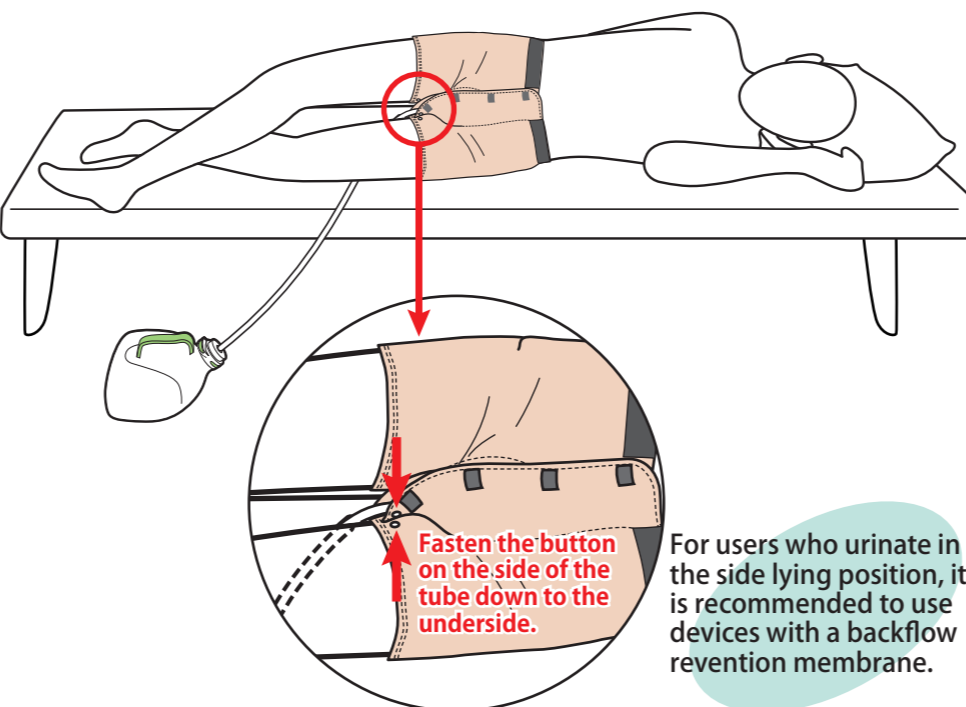
Adjust the tightness of the hook and loop tapes according to your preference. Please be careful not to fasten it too tightly to prevent stress on the user's skin.

4 Fasten the hook and loop tape at the top (4).



### Diagram for use in the side lying position

Fasten the lower button of the special underwear when lying on your side.



Fasten the button on the side of the tube down to the underside.

For users who urinate in the side lying position, it is recommended to use devices with a backflow prevention membrane.

### ● To those using the backflow prevention membrane

If the person is low mobility you can use with the receiver only.  
If the person is highly mobile and the penis slips out from the receiver, please attach the backflow prevention membrane to the receiver's retainer when using.

### FAQ Frequently asked questions

#### How do I know when to replace it?

You should replace it when the tube starts to harden and deteriorate. Deterioration will cause leaks. If you wash it frequently and keep it sanitized you can use it for a long time.

#### What are some tips to avoid leaks?

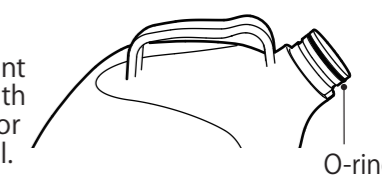
To enable the urine to flow smoothly, secure the height difference between the receiver and urine tank, and ensure that the tube isn't mashed.

#### How do I store it when not used for long periods?

Follow the instruction manual on cleaning and drying the product, and then store in a clean location away from high temperature and humidity without bending the tube.

#### Useful Tip

Apply Vaseline or other lubricant to the rubber O-ring at the mouth of the urine collection bottle for easier attachment and removal.



O-ring