

What's included / Specifications



Product weight: 145g(M size)

Size	I : Inseam H : Reference height L : Product length (with 250ml/350ml bottle)
S size	I : Up to 72cm H : Up to 160cm L : 55cm / 56.5cm
M size	I : 72 to 77cm H : 160 to 170cm L : 60cm / 61.5cm
L size	I : 77cm or longer H : 170cm or taller L : 65cm / 66.5cm

Material

- Receiver : Silicone
- Outer tube : Polyvinyl chloride(PVC)
- Inner tube : Silicone
- Bottle : Polyethylene(PE)
- Cap : Polyacetal(POM)
- Clip (body) : Polystyrene(PS)
- Clip (spring) : Stainless steel (SUS304)
- Special garter : Polyester
- Special supporter : Polypropylene
- Special supporter : Tricot



Men's wearable urine collector AS-URI S/M/L size



Weight: 200g  
(Main unit)  
Length: 60cm  
Pants size: Free size

- Receiver : Silicone
- Outer tube : Polyvinyl chloride(PVC)
- Inner tube : Silicone
- Bottle : Polyethylene(PE)
- Cap : Polyacetal(POM)
- Special underwear : Polyester
- Special supporter : Cotton
- Special supporter : Nylon
- Special supporter : Polyurethane



Men's wearable urine collector for wheelchair use AS-KUR010

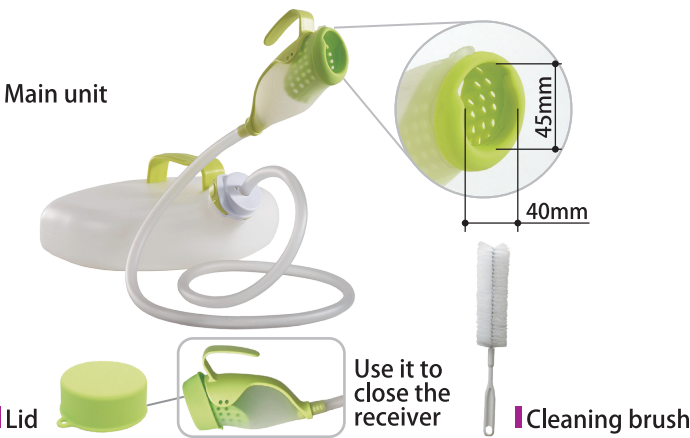


Receiver:  
Size: W5.8xD13.5xH6cm  
Weight: 70g  
Tank:  
Size 30xD24xH11cm  
Weight: 390g  
Capacity: 2.8L  
Tube length: 1.5m

- Receiver : Silicone
- Tube : Polyvinyl chloride(PVC)
- Tank : Polyethylene(PE)
- Cap : Polyacetal(POM)
- Membrane : Latex
- Special underwear : Polyester
- Special underwear : Cotton



Men's wearable urine collector for sleeping position AS-DUR010



Receiver:  
Size: W5.8xD13.5xH6cm  
Weight: 70g  
Tank:  
Size: W30xD24xH11cm  
Weight: 390g  
Capacity: 2.8L  
Tube length: 1.5m

- Receiver : Silicone
- Tube : Polyvinyl chloride(PVC)
- Tank : Polyethylene(PE)
- Cap : Polyacetal(POM)
- Handle : Polyacetal(POM)
- Lid : Silicone



Men's hand-held urine collector AS-TUR010

Men's urine collector

- Soft and comfortable silicone type
- Lightweight and prevents moist stuffy feeling
- Washable and reusable
- Reduces burden on caregivers

Men's urine collector made of soft silicone

A wearable urinary collector for those who worry about having to go all the way to the bathroom. It is inconspicuous even when worn, so you can go outside with peace of mind.



AS-URI S/M/L

A urinary collector made specifically for wheelchairs that was developed for wheelchair users. It reduces the anxiety and burden of having to go all the way to the bathroom, and you can go outside with a peace of mind.



AS-KUR010

Wearable urinary collector for sleeping position. You can wear it to bed.



AS-DUR010

A piece of mind that you do not need to go all the way to the bathroom. You can urinate on your own even in the middle of the night.



AS-TUR010





Recommended users

- For those who have problems with urinary incontinence
- For those who worry about a sudden urge to urinate
- Can be used in both standing and sitting positions
- For indoor/outdoor use  
You can wear it when going outdoors.

Wearable type

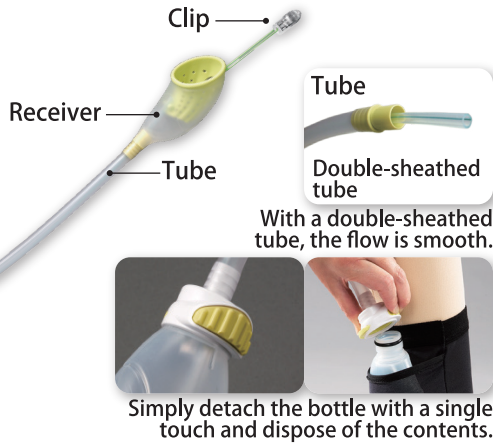
Product / Features

The double-sheaved receiver is made of soft silicone that is breathable and gentle to the skin.



Clip  
Bottle  
Cap

Bottle with a 3D design that forms to the calf

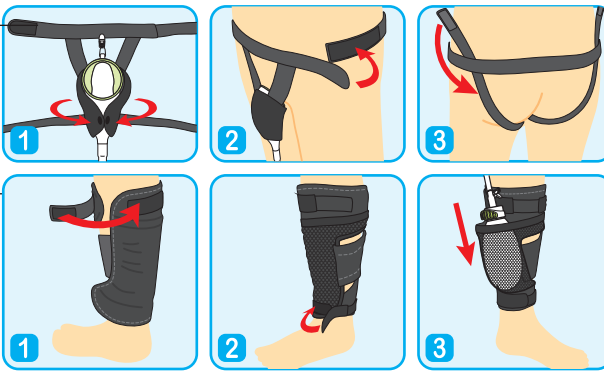


Simply detach the bottle with a single touch and dispose of the contents.

How to use



\*Since it is worn under the pants, it cannot be seen from the outside.



- Attach the receiver to the special garter.
- Adjust the height and left / right position with the waist belt.
- Pass the special supporter between your legs and secure it.
- Put the urine collection bottle in your pocket and secure it.
- Wear your pants over it.

- Please make sure the flow track is unobstructed so that urine can flow smoothly during use.
- You need to make sure it is flowing downward naturally.
- After use, please wash and disinfect daily and let it dry.

AS-URL S/M/L

- For those who have problems with urinary incontinence
- For those who worry about a sudden urge to urinate
- Can use while in a wheelchair
- For indoor/outdoor use  
You can wear it when going outdoors.

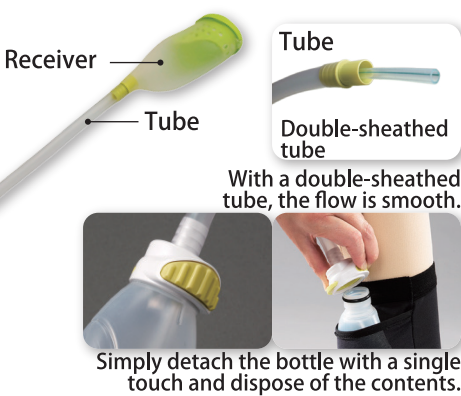
Wearable type for wheelchair use

The double-sheaved receiver is made of soft silicone that is breathable and gentle to the skin.



Bottle  
Cap

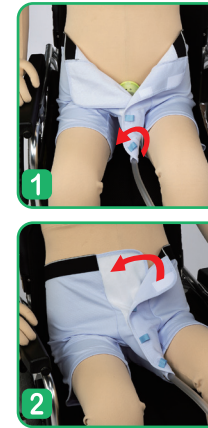
Bottle with a 3D design that forms to the calf



Simply detach the bottle with a single touch and dispose of the contents.



\*Since it is worn under the pants, it cannot be seen from the outside.



- Secure it so that the special pants wrap around the receiver.
- Secure the pants with the Velcro.
- Put the urine collection bottle in your pocket and secure it.
- Wear your pants over it.

- Please make sure the flow track is unobstructed so that urine can flow smoothly during use.
- You need to make sure it is flowing downward naturally.
- After use, please wash and disinfect daily and let it dry.

AS-KUR010

- For those who want to be able to urinate in a sleeping position
- You can wear it in a sleeping position.
- For indoor use

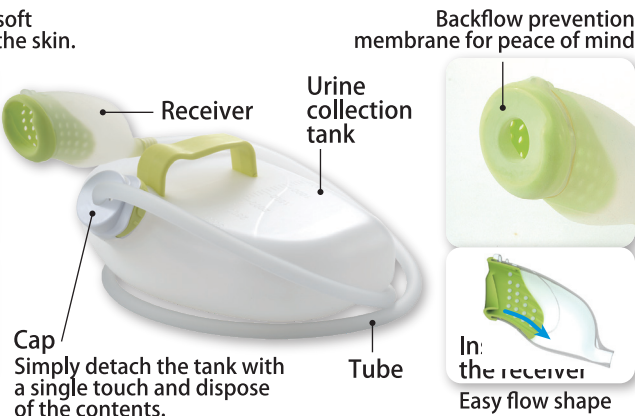
Wearable type for sleeping position

The double-sheaved receiver is made of soft silicone that is breathable and gentle to the skin.



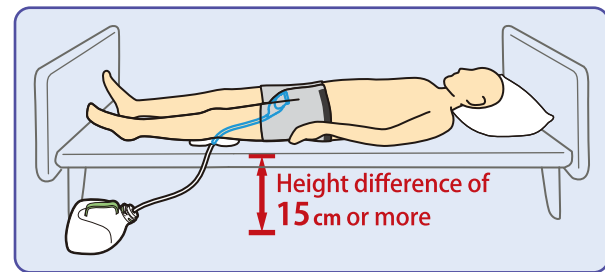
Cap

Simply detach the tank with a single touch and dispose of the contents.

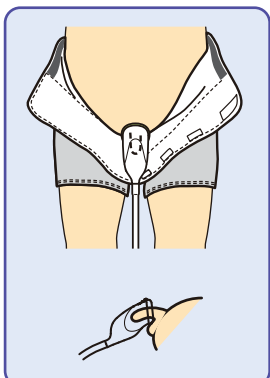


Backflow prevention membrane for peace of mind

In: the receiver  
Easy flow shape



- Make sure a height difference of 15cm or more is secured between the floor and the tube.
- The urine collection tank has a capacity of 2.8 L and can collect urine for one night.
- The urine collector cannot be used for those who will remove it from themselves or those with forceful body movements.



Easy to detach and put on with hook and loop tapes. ▲



- Please make sure the flow track is unobstructed so that urine can flow smoothly during use.
- You need to make sure it is flowing downward naturally.
- Please wash and disinfect daily and let it dry.

AS-DUR010

- For those who want to use it at the bedside, etc.
- You can urinate without having to go all the way to the bathroom.
- It can be used in standing, sitting and supine positions
- For indoor use

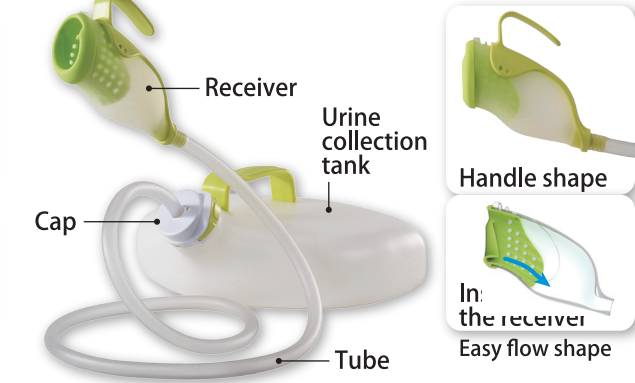
Hand-held type

The double-sheaved receiver is made of soft silicone that is breathable and gentle to the skin.



Cap

Simply detach the tank with a single touch and dispose of the contents.

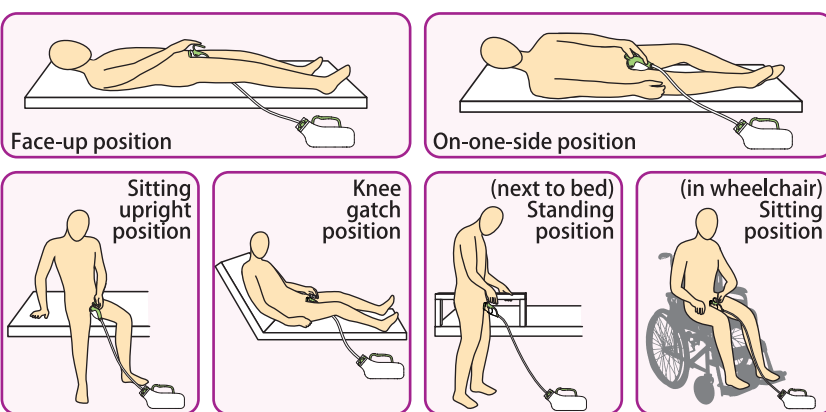


Handle shape

In: the receiver  
Easy flow shape



- Hold the receiver in your hand and lower the tube to set it.
- It can be used in various positions.



- Please make sure the flow track is unobstructed so that urine can flow smoothly during use.
- You need to make sure it is flowing downward naturally.
- Please wash and disinfect daily and let it dry.

AS-TUR010