

AZSEALER

- Strong sealing
- Impulse sealing
- Compact body



Simply apply light pressure to the table with both hands to seal tightly.

Dual - heating element model



For metalized bags and thick gazette bags.



AZ-300W Seal length 300mm(11.8in)

Heating elements are mounted on both upper and lower sides. It is possible to seal aluminum metalized film bags with four layers overlapping firmly.



Single - heating element model



For thin or thick single - layer film bags.



AZ-300S Seal length 300mm(11.8in)

Heating element is mounted on lower side. This model is suited for non-overlapping plastic bags.



Secure and beautiful sealing

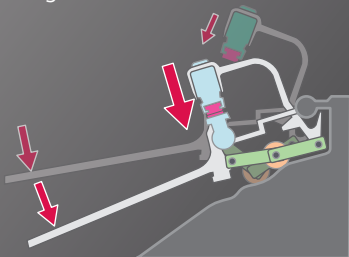
You can easily seal bags with heavy or unwieldy contents while steadying the bag with both hands. It is also possible to seal thick plastic bags smoothly and wrinkle-free.

Sealing face



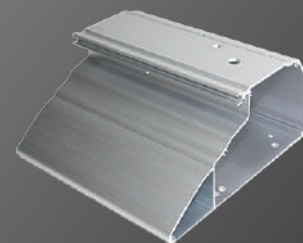
Levered structure

The levered mechanical structure of this compact yet powerful sealer is designed to generate a strong seal by lightly pressing the table.



Solid unibody constructed frame

The body is made from a single piece of solid aluminum. The aluminum table can be easily cleaned to maintain a spotless work space.





Applications

- **Food**
Vegetables, Grain, Seafoods
- **Stores**
Bakeries, Meat stores,
- **Factories**
Foods, Confectioners,
Industrial factories



Ideal for sealing bags that provide protection from light, moisture, discoloration, loss of fragrance and is also perfect for use with silica gel packets.

Aluminum table

Sealing lamp

No warm-up time

Adjuster knob

Sealing area

Teflon sheet winding shaft

Teflon sheets can be easily changed through pre-wound dispenser.

Dual - heating element model



AZ-300W

Perfect for metallic bag sealing to keep loose-leaf tea and coffee beans fresh by preserving fragrance and protecting from light.



Sealing width

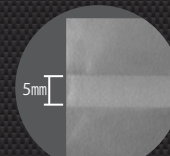


Single - heating element model



AZ-300S

Ideal for sealing single - layer thick bags, thin bags and all sizes in between stably and efficiently.



Sealing width



Recommended maximum sealing thickness

Sealing type	Polyethylene	Polypropylene	Nylon polyethylene	Vinylon	Laminated materials
Dual - heating	0.6mm/0.024in	0.4mm/0.016in	0.4mm/0.016in	0.4mm/0.016in	0.5mm/0.019in
Single - heating	0.2mm/0.008in	0.2mm/0.008in	0.1mm/0.004in	0.1mm/0.004in	0.1mm/0.004in

※Total thickness of two or more layers. Actual thickness may vary.

Specifications

Model name	Sealing type	Sealing length	Sealing width	Power consumption	Dimensions (Width x Height x Depth)	Weight
AZ-300W	Dual - heating	300mm /11.8in	8mm/0.315in	1100W	340×170×300mm 13.4×6.7×11.8in	6.7kg
AZ-300S	Single - heating	300mm /11.8in	5mm/0.197in	580W	340×170×300mm 13.4×6.7×11.8in	4.5kg

Asahi Industry Co., Ltd.

1-11-22, YONBAN, ATSUTA-KU, NAGOYA, AICHI
456-0051 JAPAN
TEL +81-52-671-5193 FAX +81-52-671-5196
E-mail : trading@asahi-sg.co.jp
Website : http://www.asahi-sg.co.jp